

Executive Team

Dennis D. LaMoreaux
 General Manager, CEO

Michael Williams
 Finance Manager, CFO

The Pipeline is published by Palmdale Water District's Public Affairs Department.

EDITOR/WRITER
Judy Shay, Public Affairs Director

WRITER/DESIGNER
Laura Gallegos, Public Affairs Specialist

Mission Statement

Since 1918, the Palmdale Water District has provided high-quality water at a reasonable cost. We pride ourselves on great customer service; advocating for local water issues that help our residents; educating the community on water conservation; and leading our region in researching and implementing emerging technologies that increase operational efficiency.

Charging Stations coming to Palmdale Water District

Do you drive an electric vehicle and worry about not having enough charge? Well, worry no more. By mid-October, there will be two electric car charging stations on site at the Palmdale Water District office for both employees and the community.

Through a grant from the Antelope Valley Air Quality Management District, PWD will install two charging stations – one at the front of the main office and the other at the northwest corner behind the employee parking lot. The front unit will have one charging port and a 100 miles per charging hour capability while the back unit will have two charging ports and a 25 miles per charging hour capability.

Cost to vehicle owners will be what the District pays for its electricity, which is about 11-12 cents per kilowatt hour. The District will not profit from the charging stations.

"The District has a desire to be a partner in promoting energy efficiency," said James Riley, PWD Engineering /Grant Manager. "The installation of electric vehicle charging stations will contribute to saving energy needs being provided by fossil fuel. This is part of our commitment to the community."

The two charging units, including labor, will cost \$37,039. Under the agreement with the Antelope Valley Air Quality Management District, the District is responsible for \$6,250 and will provide the labor for the installation. This equals to receiving an 82 percent grant for the project.

Installation of the charging stations will begin in mid-August and be completed in mid-October.



Celebrating a Century of Service

Next year marks an important milestone for Palmdale Water District. We are celebrating our 100-year anniversary! We are excited about this major accomplishment and are looking forward to what the future has in store for our community and our most precious resource – water.

This community has been an integral part in developing our foundation and expansion over the last century. Throughout this year's celebration, the District will highlight the leaders and members of the community who have played a key role in this shared success.

Join us every month for a new set of displays in our District's main lobby and at the Palmdale City Library. Additionally, the District will be offering exclusive tours to and from the Littlerock Dam and Reservoir.

As we embark on our yearlong celebration, we want to invite you to see our float at the AV Fair Parade; customer appreciation days; and our main centennial event in July 2018.

We continue to reflect on our past and build for our future. Together, we accomplished a century of service and look forward to 100 more!

100TH ANNIVERSARY EVENTS:

Littlerock Dam Tours

Sept. 2017 - July 2018

Sign-ups Required:
 661-441-5941

tours@palmdalewater.org

AV Fair Parade

Saturday, Aug. 19, 9 a.m.

Come see the PWD float!

UPCOMING EVENTS:

August Board Meetings

Wednesday, Aug. 9 & 23
 7pm

Landscape Workshop

Saturday, Sept. 16
 9-11am @ Antelope Valley College

September Board Meetings

Wednesday, Sept. 13 & 27
 7pm

Landscape Workshop

Saturday, Oct. 21
 9-11am @ Antelope Valley College

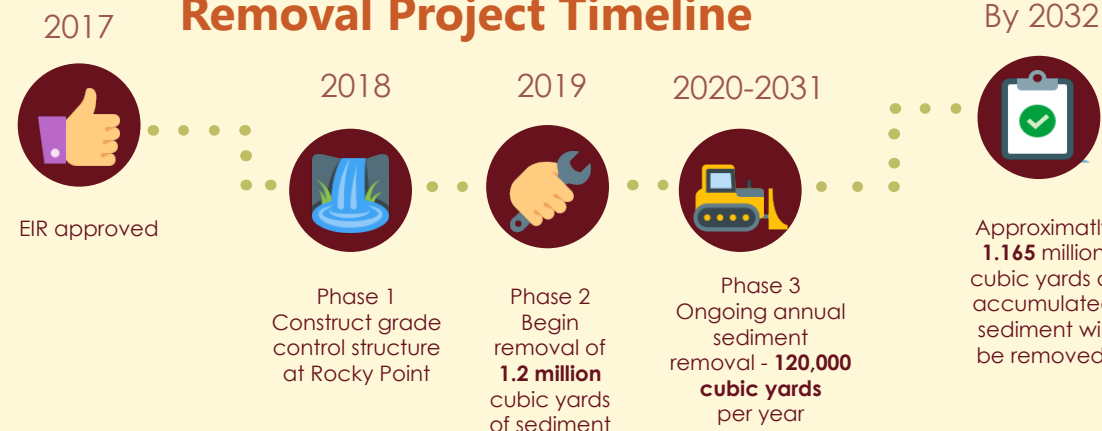
October Board Meetings

Wednesday, Oct. 11 & 25
 7pm

Littlerock Reservoir Sediment Removal Project Timeline

Palmdale Water District proposed the Littlerock Reservoir Sediment Removal Project in partnership with the Angeles National Forest, USDA Forest Service.

During seasonal rainfalls, rains, and snowmelt, sediment is transported to the reservoir. This buildup of sediment has reduced the storage capacity and flood control capabilities of the reservoir and dam.



Connect With Us!
 @PalmdaleH2O





100 Years in the Making 1918-2018

Today, Littlerock Dam and Reservoir supplies 12 percent of the District's water source. The two other sources are the State Water Project (California Aqueduct) at 50 percent and groundwater at 38 percent. To distribute the water to its customers, PWD maintains 413 miles of pipeline ranging in size from 4" to 48" in diameter, and operates 26 water wells, 15 booster pumping stations and 20 storage reservoirs with a total capacity of 52 million gallons of water.



In 1923, in Harold, there was a large sign that read: "This way to the Littlerock Dam, the highest multiple-arched dam in the world being built by the Bent brothers." (April 1926)

Over the years, PWD has updated its facilities to ensure that it can continue to supply high-quality water to a growing community within



First unit of the District's water treatment facility. It was unique because it was the only plant in Southern California for domestic service except for Colorado River Works. (1955)

its 187-square-mile boundary in unincorporated northeastern Los Angeles County and the City of Palmdale. In 2009, the then 22-year-old water treatment plant was upgraded and expanded to allow up to 35 million gallons of water per day to be processed using a state-of-the-art charcoal filtration system. The plant was named the Leslie O. Carter Water Treatment Plant in 2010 in honor of Les Carter who had served on the District's Board of Directors from 1971-2004.

As the centennial celebration gets underway, there are two major projects that will take PWD into its second century of providing water services. The first is the Littlerock Sediment Removal Project, which will increase the capacity of the Littlerock Dam and Reservoir by removing sediment so that the dam can return to its 1992 planned capacity of 3,500 acre feet of water. As of today, it will take 7 to 12 years to remove the sediment and the continuing silt that builds up.

The second project is the Palmdale Regional Groundwater Recharge and Recovery Project. This groundwater banking program will take a blend of recycled water with California Aqueduct water and spread it over a 160-acre site. This blend of water will filter down through the ground where it will join the natural aquifer.

Both of these projects, which are in their initial phases, will take the Palmdale Water District into its second century of service.



Before the Littlerock Dam was constructed, there was the Palmdale Reservoir, which was completed in 1897. (January 1920)

Employee Spotlight

Dennis D. LaMoreaux, General Manager

Leading Palmdale Water District into its next century of service is General Manager Dennis D. LaMoreaux, who has held the District's top post for the past seven years and also during the years 1994-2008. Dennis began working for PWD as the Assistant Engineer-Manager in 1989. Five years later, he was promoted to General Manager. In 2008, Dennis left the District and returned in 2010.



As General Manager, Dennis is responsible for overseeing the day-to-day operations of the District and the implementations of policies adopted by the five-member Board of Directors. He oversees 10 departments, composed of nearly 90 employees, whose jobs provide high-quality water to a population of more than 115,000 in the District's boundaries.

"It is an exciting time to be part of the Palmdale Water District," Dennis said. "As we celebrate our 100 years, we simultaneously look ahead and plan for the next 100 with projects like the Palmdale Regional Groundwater Recharge and Recovery Project and the Littlerock Sediment Removal Project. These are important projects to help ensure our customers will have enough water in the years ahead."

In addition to his District duties, he is the Executive Director of the Palmdale Recycled Water Authority and is on the Advisory Committee for the Watermaster.

Prior to PWD, Dennis worked for private consulting firms in California and Wyoming where he was involved with design and inspection of projects. A graduate of the University of Wyoming, the Ohio native has a Bachelor of Science in Civil Engineering and is licensed in California as a civil engineer. He lives in Palmdale with his wife. He enjoys fishing, bowling and spending time with his five stepchildren and five step-grandchildren.

100 Years in the Making 1918-2018

The Palmdale Water District (PWD) is one year away from its 100th anniversary, and an integral part of the celebration is researching and sharing its dynamic history with the community it serves. The District has grown exponentially from its early days in 1918 when 200 people received service to today's population of more than 115,000 people. Through the century, PWD has undergone major changes to meet water demands. But one thing has never changed – our mission to provide high-quality water to current and future customers at a reasonable cost.



Palmdale Reservoir was a popular recreation area for pioneers. (July 1896)

The history of PWD began in 1918 when a new dam was proposed for Little Rock Creek. Due to the steep \$300,000 price tag, it was decided that a public irrigation district could best finance the project. On July 9, 1918, the public voted to form the Palmdale Irrigation District, which became officially established by a resolution signed by the Los Angeles County Board of Supervisors on July 22, 1918.

The Palmdale Irrigation District, which became PWD in 1973, provided irrigation water for the agricultural community and built the Littlerock Dam with Littlerock Creek Irrigation District. The multiple-arch dam on Little Rock Creek was designed by engineer John S. Eastwood, who had previously designed nine dams in the U.S. and Canada. The Littlerock Dam became known as the biggest multi-arch dam in world when it was completed in 1924 after two years of construction. But through the years, the dam's integrity was questioned several times. A roller-compacted concrete structure was added to the dam in 1994, which brought it up to state-mandated regulations.

(continued on next page)



Paul Schoeller (right), a surveyor, and another man are examining the headgates for Palmdale's water supply. (1896)

