



BEAR

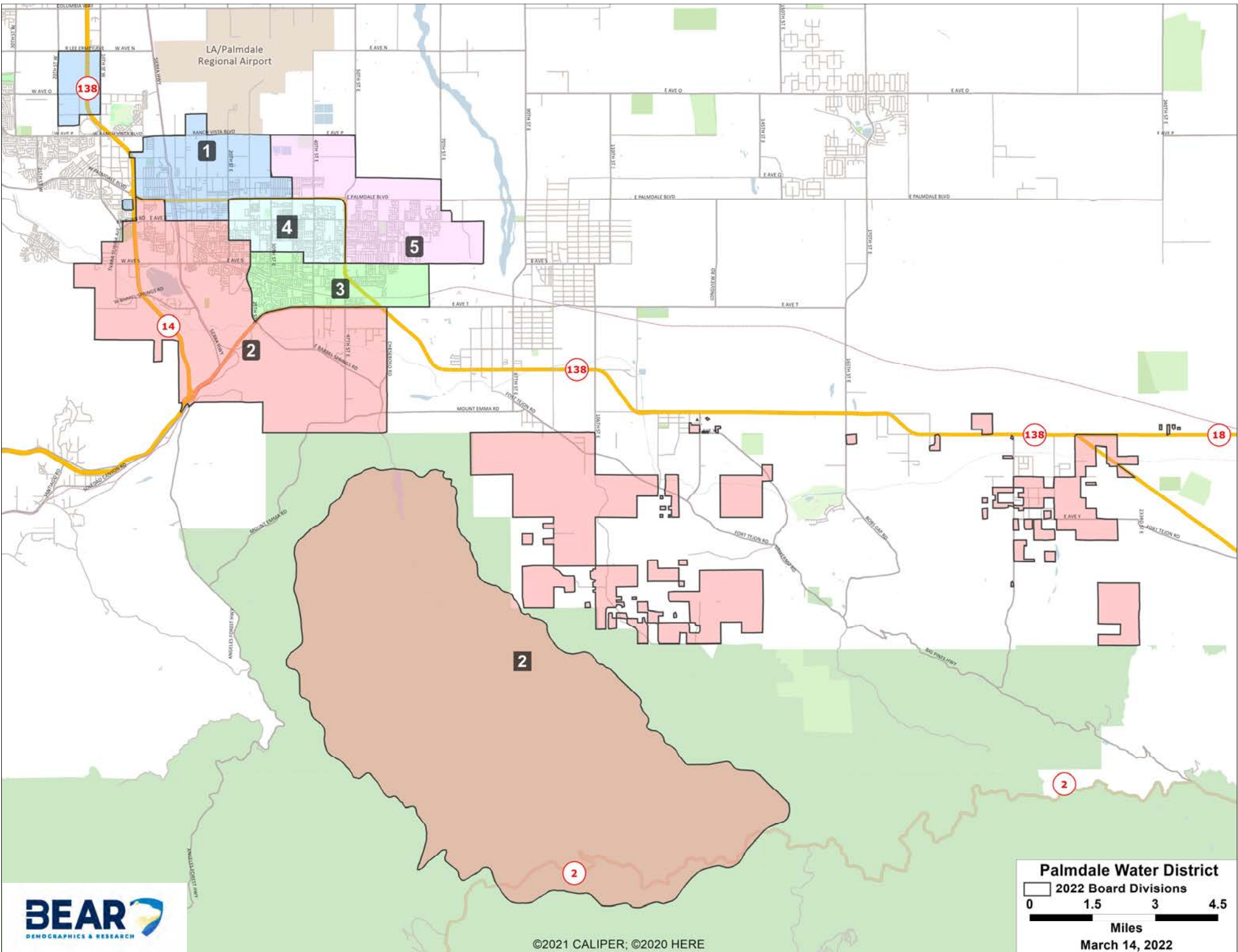
DEMOGRAPHICS & RESEARCH

Palmdale Water District

2022 Division Boundaries FINAL MAP OPTIONS

March 14, 2022

**FINAL MAP
OPTION #1
CURRENT
DISTRICT MAP**

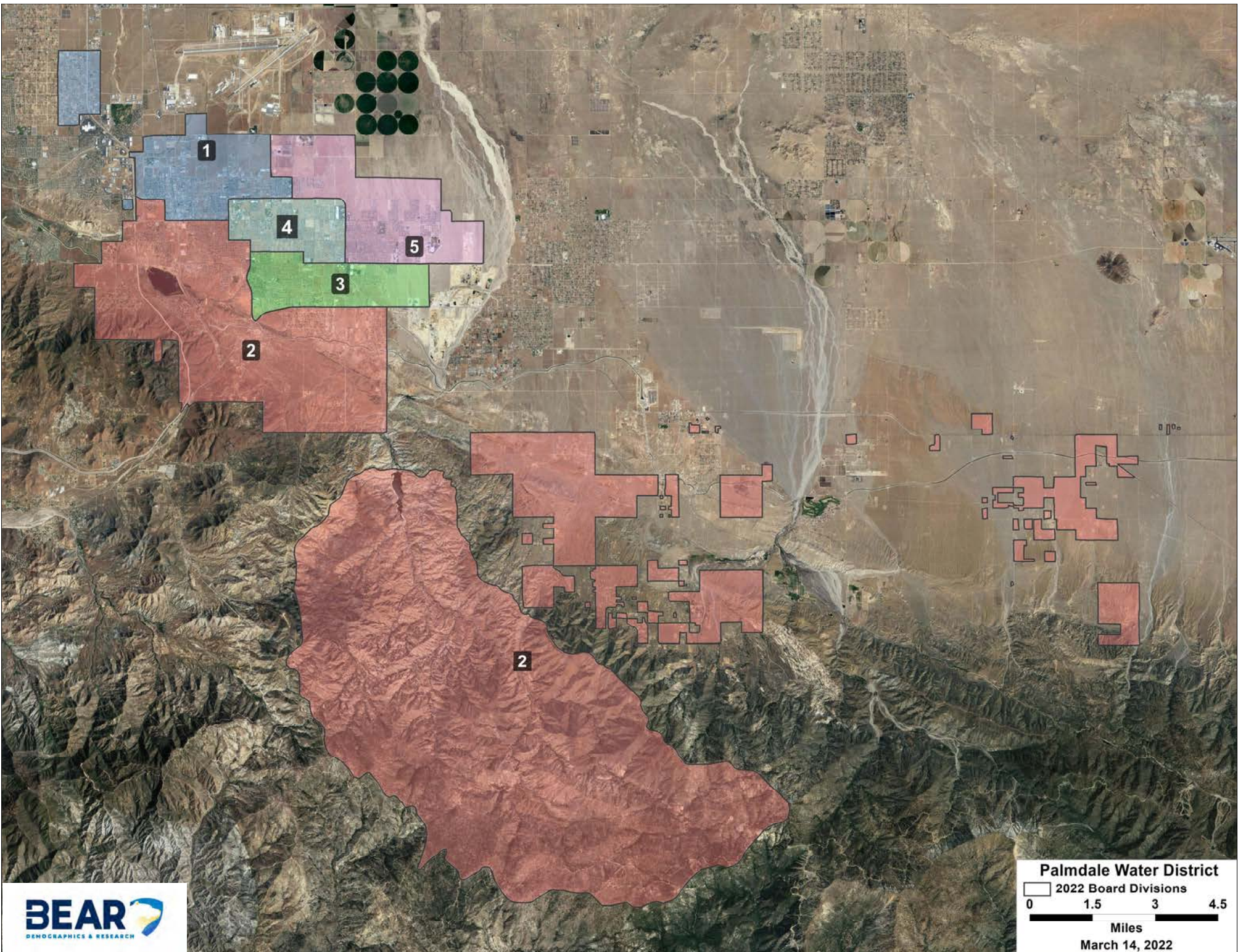


LA/Palmdale
Regional Airport

Palmdale Water District
 2022 Board Divisions
 0 1.5 3 4.5
 Miles
 March 14, 2022

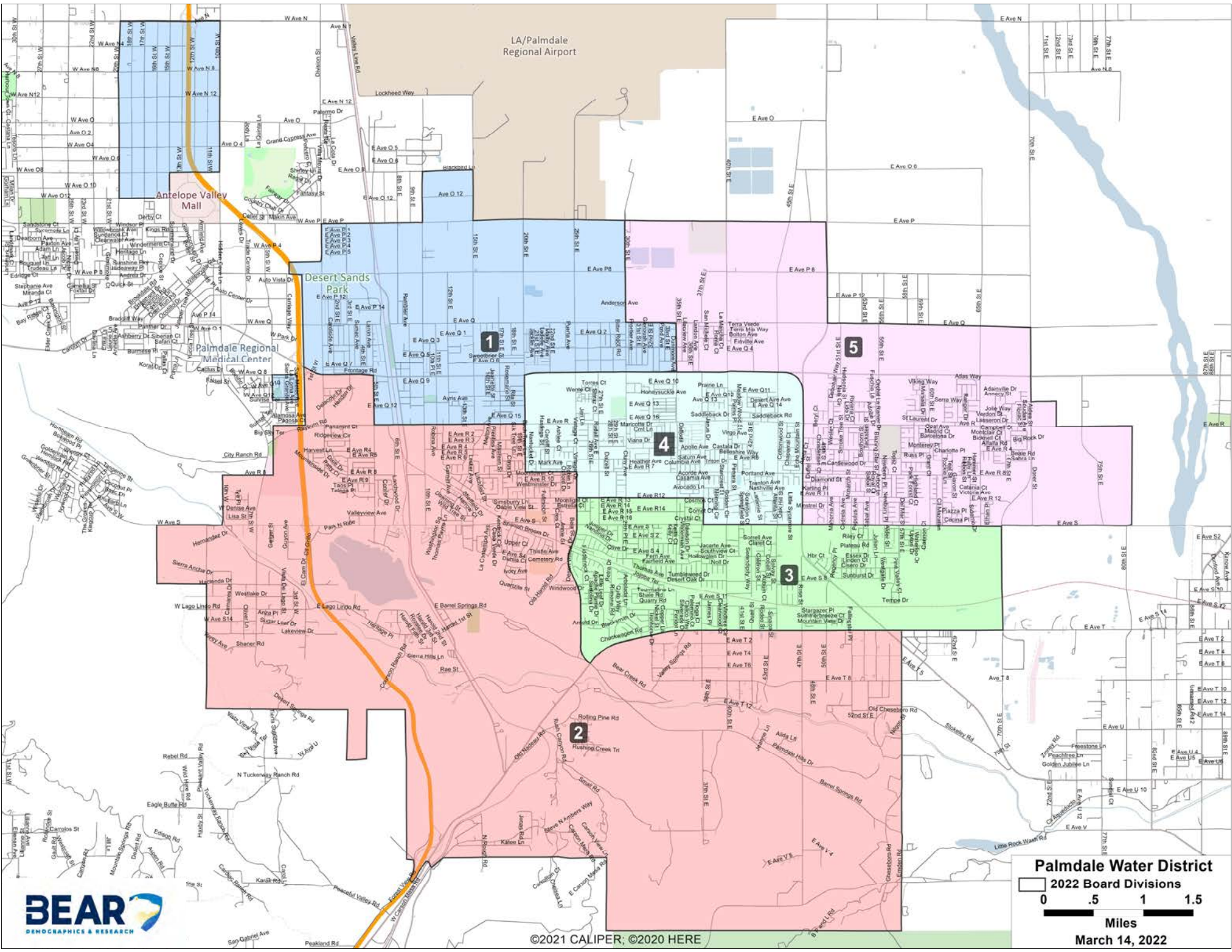


©2021 CALIPER; ©2020 HERE



Palmdale Water District
 2022 Board Divisions

0 1.5 3 4.5
 Miles
 March 14, 2022



LA/Palmdale
Regional Airport

Antelope Valley
Mall

Desert Sands
Park

Palmdale Regional
Medical Center

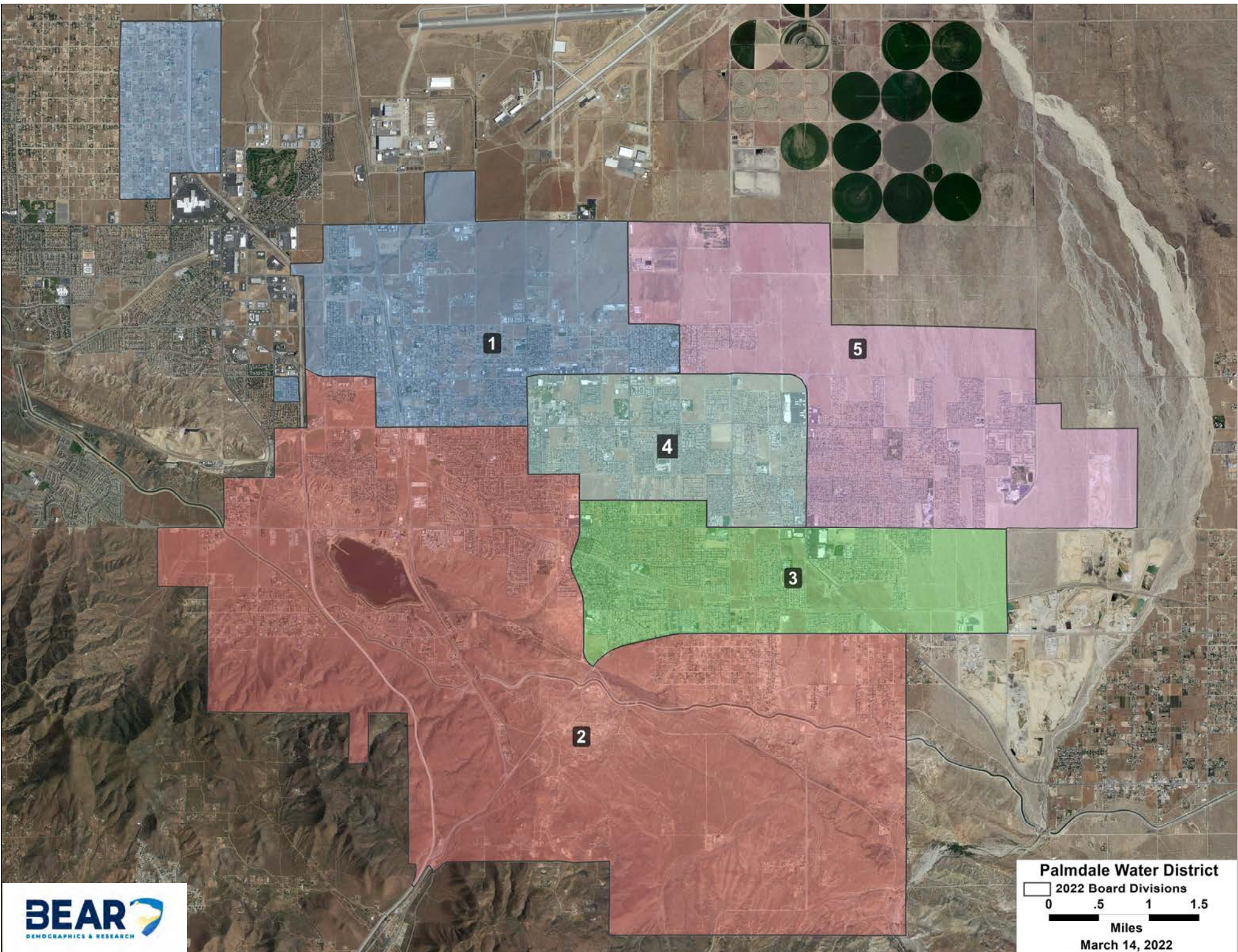
Palmdale Water District
 2022 Board Divisions

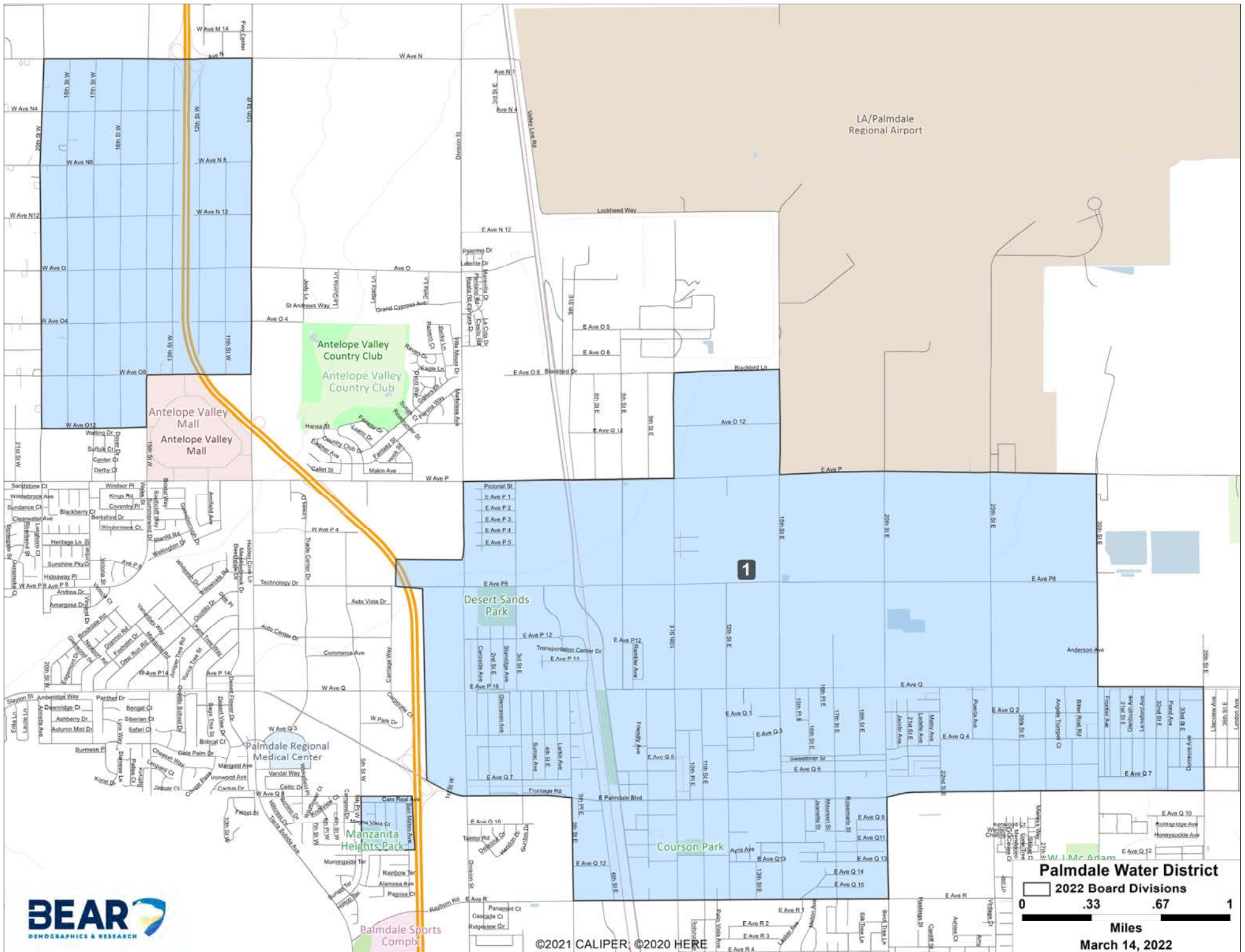
0 .5 1 1.5
 Miles

March 14, 2022



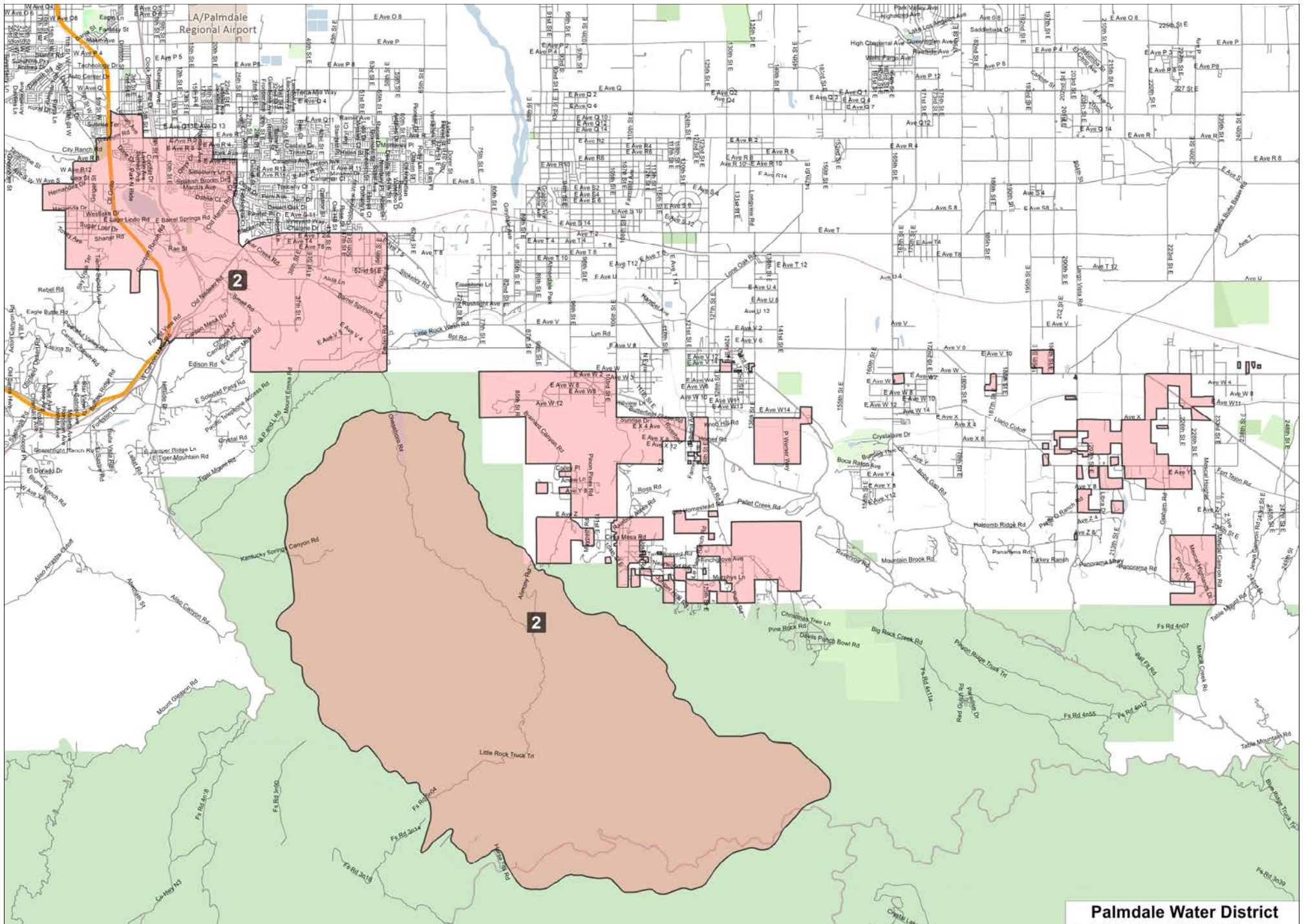
©2021 CALIPER; ©2020 HERE





©2021 CALIPER, ©2020 HERE

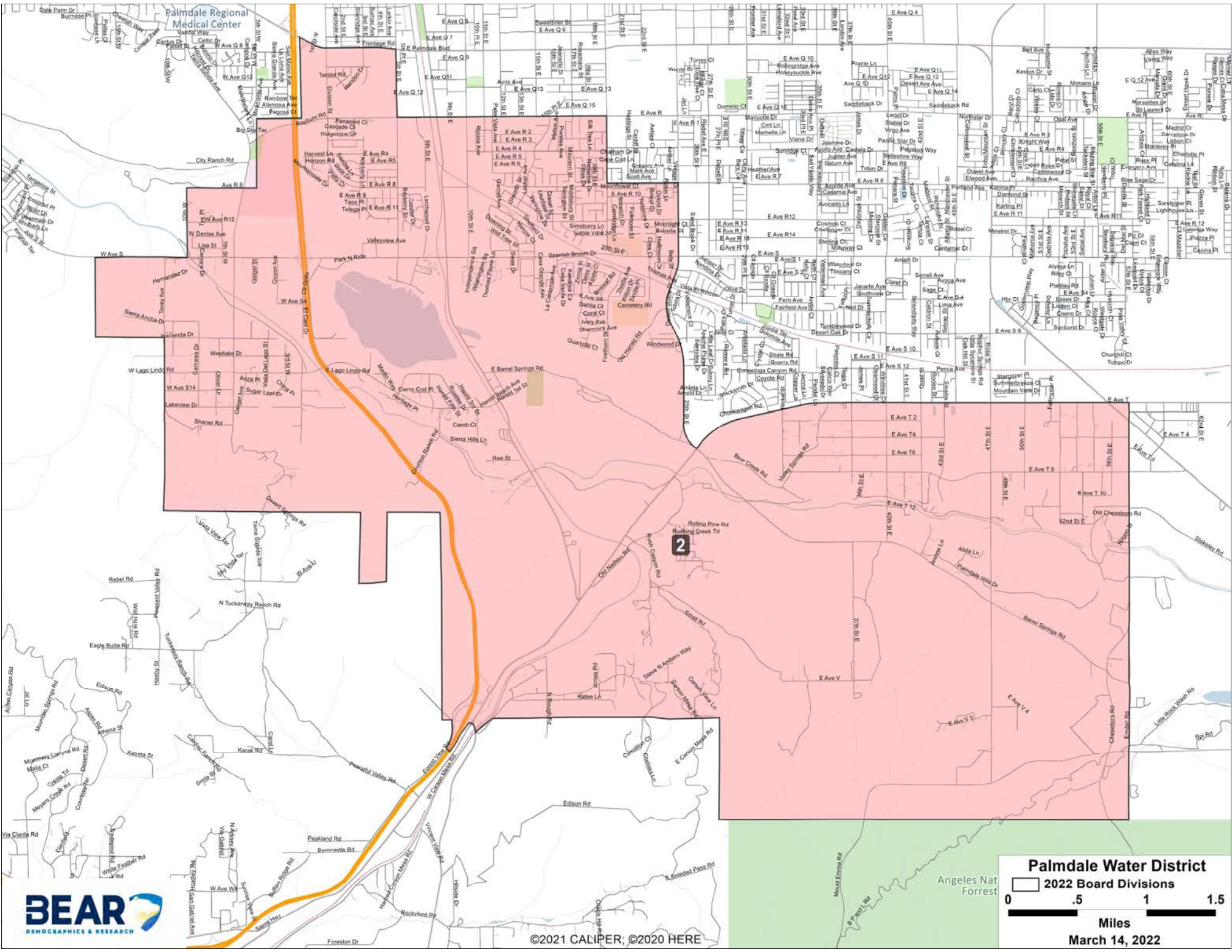
Palmdale Water District
 2022 Board Divisions
 0 .33 .67 1
 Miles
 March 14, 2022



©2021 CALIPER; ©2020 HERE

Palmdale Water District
 2022 Board Divisions

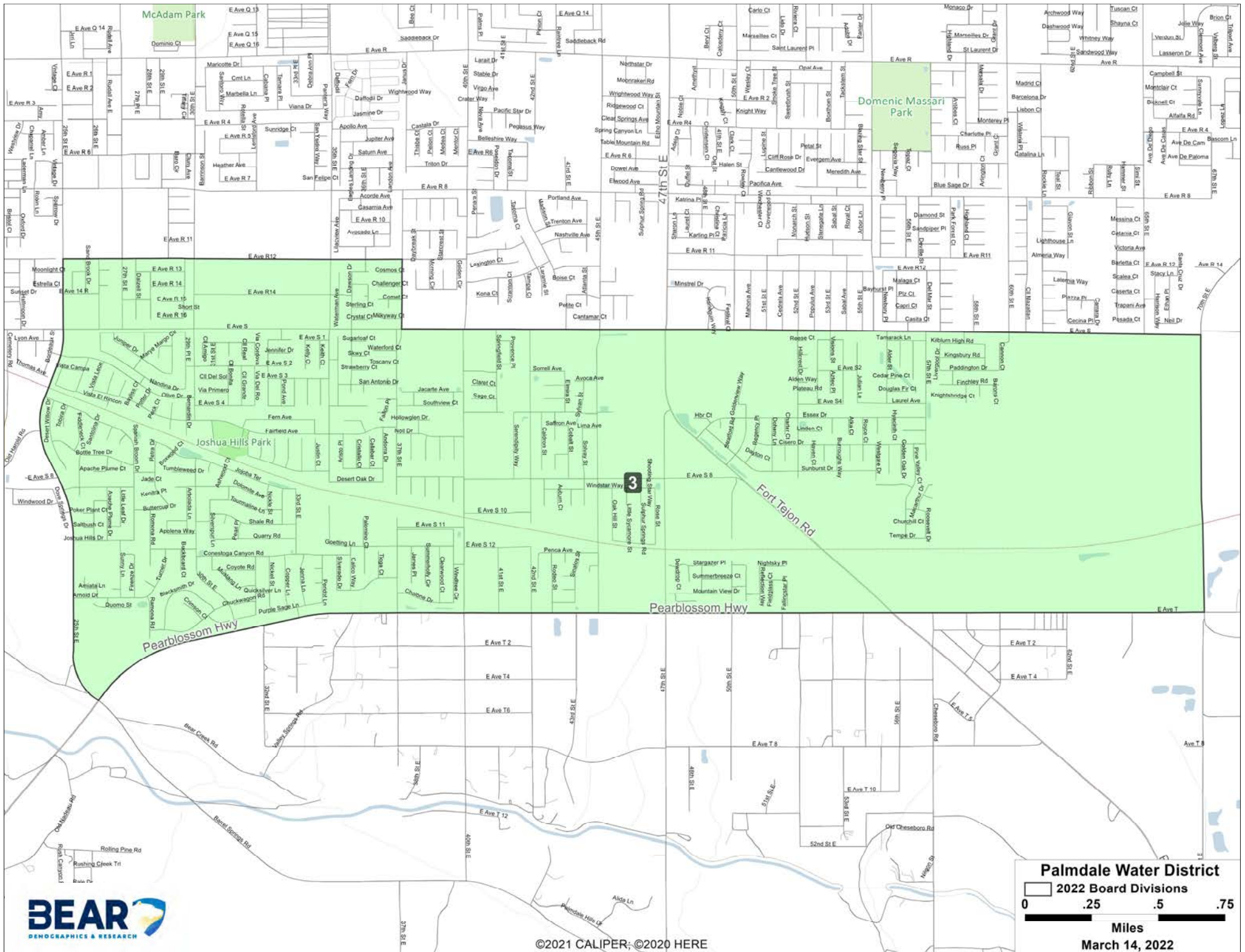
0 1.5 3 4.5
 Miles
 March 14, 2022



©2021 CALIPER, ©2020 HERE

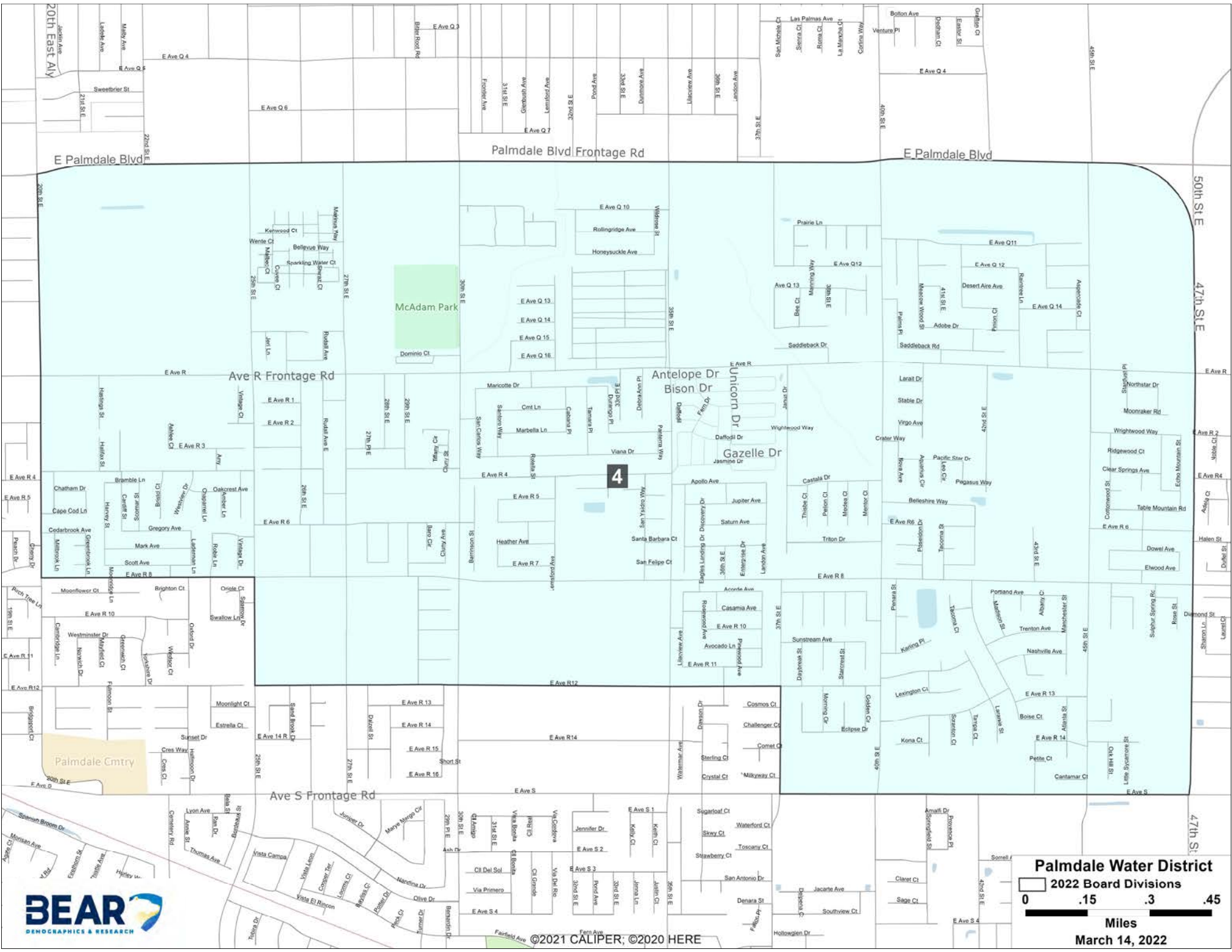
Palmdale Water District
 2022 Board Divisions

0 .5 1 1.5
 Miles
 March 14, 2022



©2021 CALIPER; ©2020 HERE

Palmdale Water District
 2022 Board Divisions
 0 .25 .5 .75
 Miles
 March 14, 2022

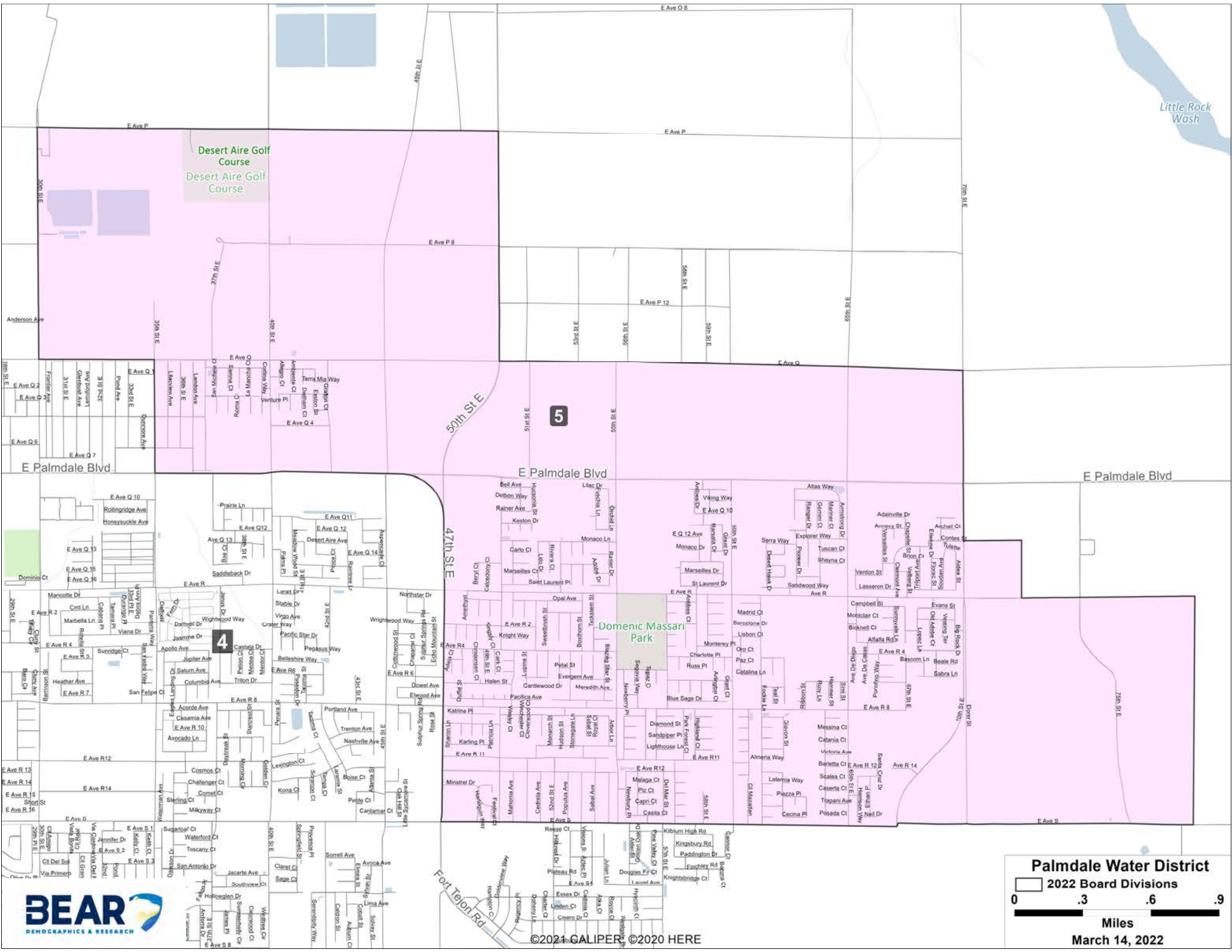


©2021 CALIPER; ©2020 HERE

Palmdale Water District
 2022 Board Divisions

0 .15 .3 .45
 Miles

March 14, 2022



Little Rock Wash

Desert Aire Golf Course

5

Domenic Massari Park



©2021 GALIPER, ©2020 HERE

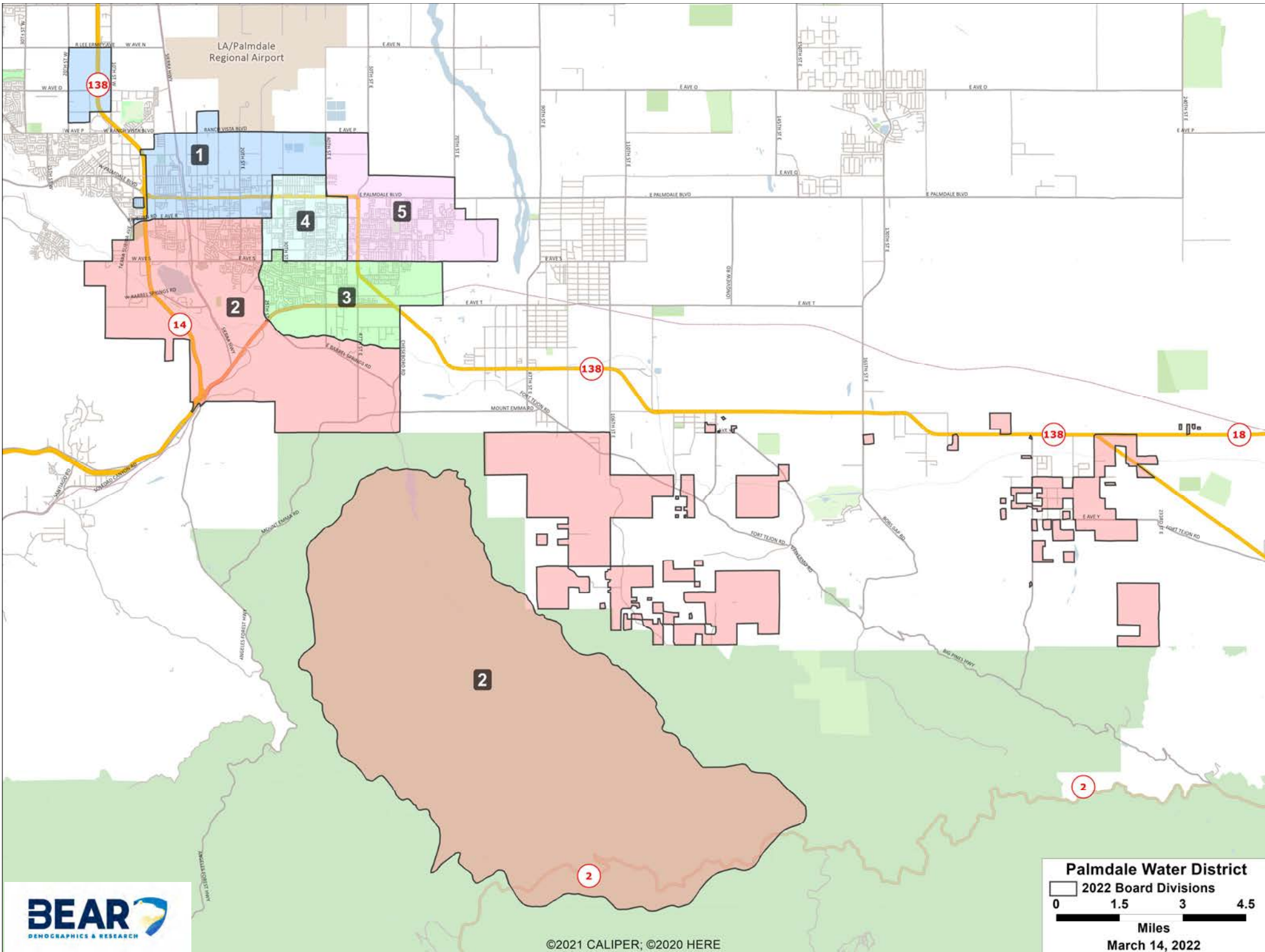
Palmdale Water District
 2022 Board Divisions

0 .3 .6 .9
 Miles
 March 14, 2022

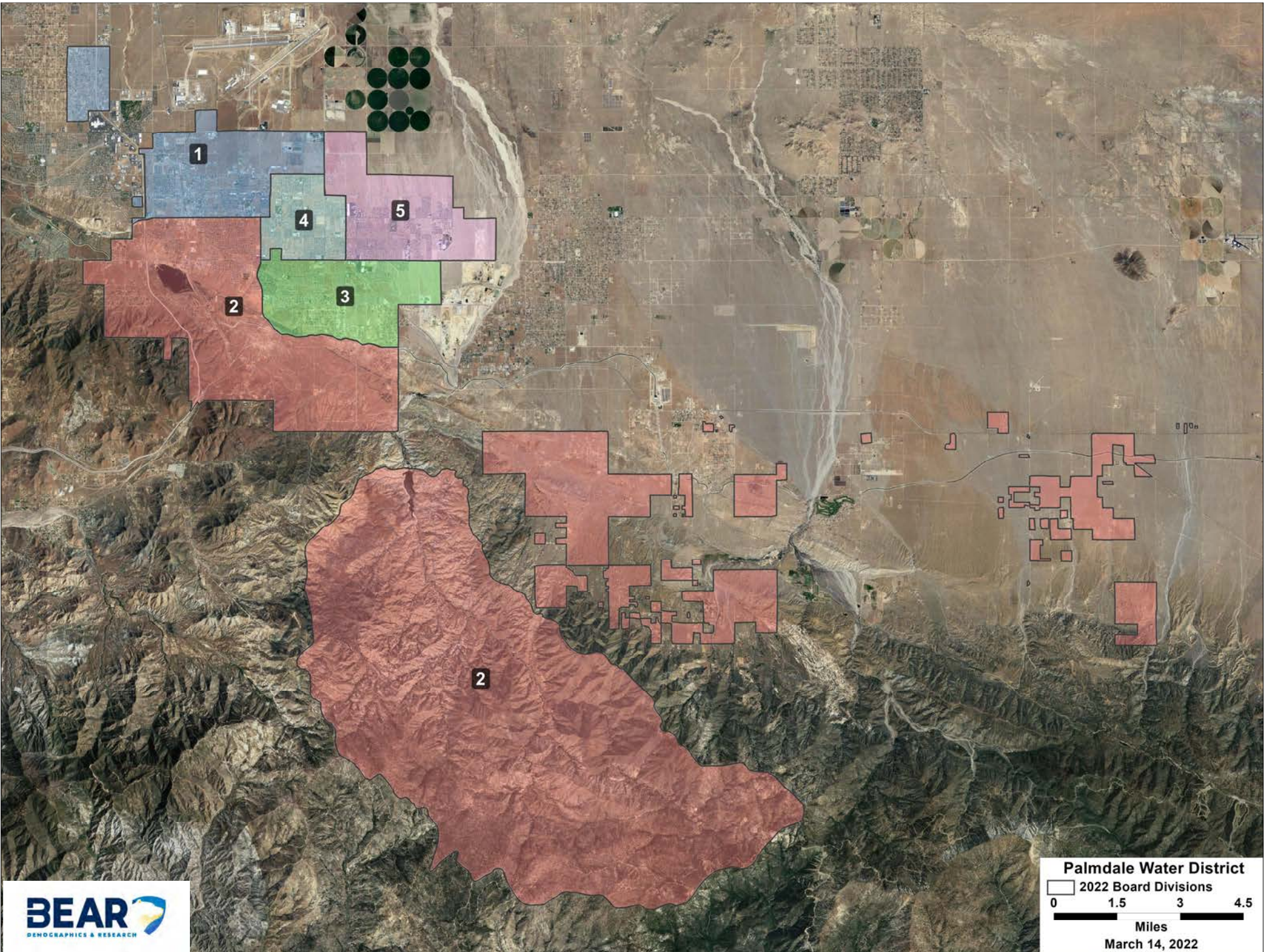
**Palmdale Water District
2022 Board Divisions Demographic Profile**

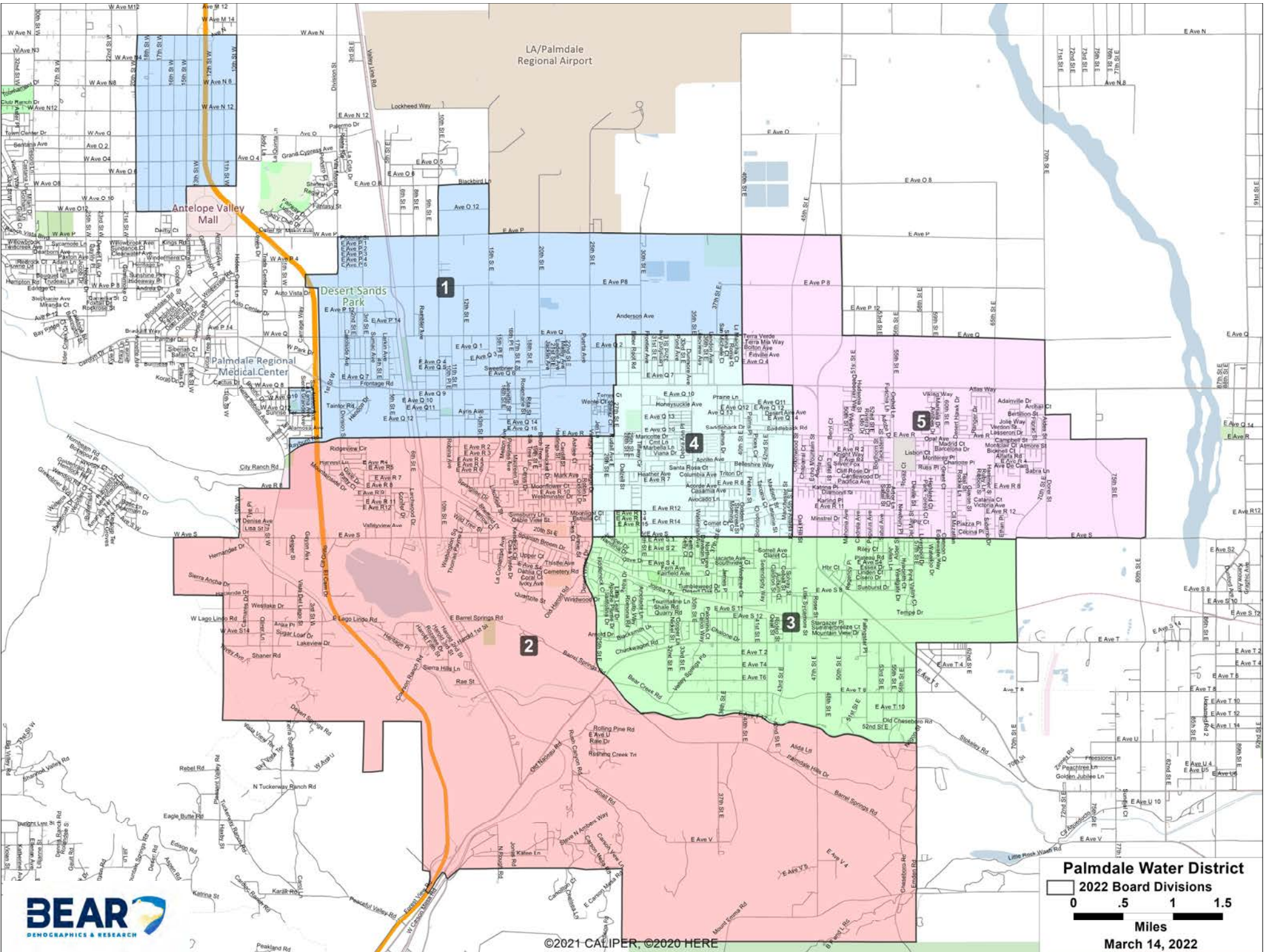
Board of Directors Divisions	1	2	3	4	5	Total	
Total Population (Pop)	25,695	25,645	25,200	24,892	25,562	126,994	2020 Census State Adjusted Redistricting Data
Deviation	296	246	(199)	(507)	163	803	
% Deviation	1.2%	1.0%	-0.8%	-2.0%	0.6%	3.2%	
Latino	67.1%	65.1%	71.1%	70.7%	71.4%	69.1%	
White	9.9%	17.4%	11.6%	11.8%	8.6%	11.8%	
Black	18.5%	12.2%	12.0%	11.8%	14.3%	13.8%	
American Indian	0.7%	0.8%	0.4%	0.7%	0.5%	0.6%	
Asian	2.0%	2.6%	2.9%	3.0%	3.3%	2.8%	
Hawaiian, Pacific Islander	0.1%	0.1%	0.3%	0.2%	0.1%	0.2%	
Other Race	0.8%	0.8%	0.8%	0.8%	0.9%	0.8%	
Multi Minority Race	0.8%	0.9%	0.8%	0.9%	0.9%	0.9%	
Voting Age Population (VAP)	17,393	18,776	18,436	17,997	18,101	90,704	
Latino	64.5%	61.8%	68.7%	67.7%	69.5%	66.4%	
White	12.1%	20.7%	13.5%	14.1%	9.9%	14.1%	
Black	18.4%	11.9%	12.2%	12.1%	14.5%	13.7%	
American Indian	0.8%	0.9%	0.5%	0.8%	0.5%	0.7%	
Asian	2.4%	2.9%	3.3%	3.5%	3.7%	3.2%	
Hawaiian, Pacific Islander	0.1%	0.1%	0.3%	0.2%	0.1%	0.2%	
Other Race	0.8%	0.8%	0.8%	0.8%	0.8%	0.8%	
Multi Minority Race	0.8%	0.8%	0.8%	0.8%	0.9%	0.8%	
Citizen Voting Age Population (CVAP) 2019	12,183	14,090	13,833	13,672	13,557	67,334	2019 ACS CVAP Tabulation
Latino	57.6%	57.3%	59.5%	59.7%	61.4%	59.1%	
White	17.4%	26.6%	19.3%	22.2%	15.8%	20.4%	
Black	20.5%	10.2%	17.0%	12.1%	18.6%	15.5%	
Asian	2.5%	4.1%	2.9%	5.4%	3.8%	3.8%	
All Other	2.1%	1.8%	1.4%	0.5%	0.5%	1.2%	

**FINAL MAP
OPTION #2
ALTERNATIVE
DISTRICT MAP**

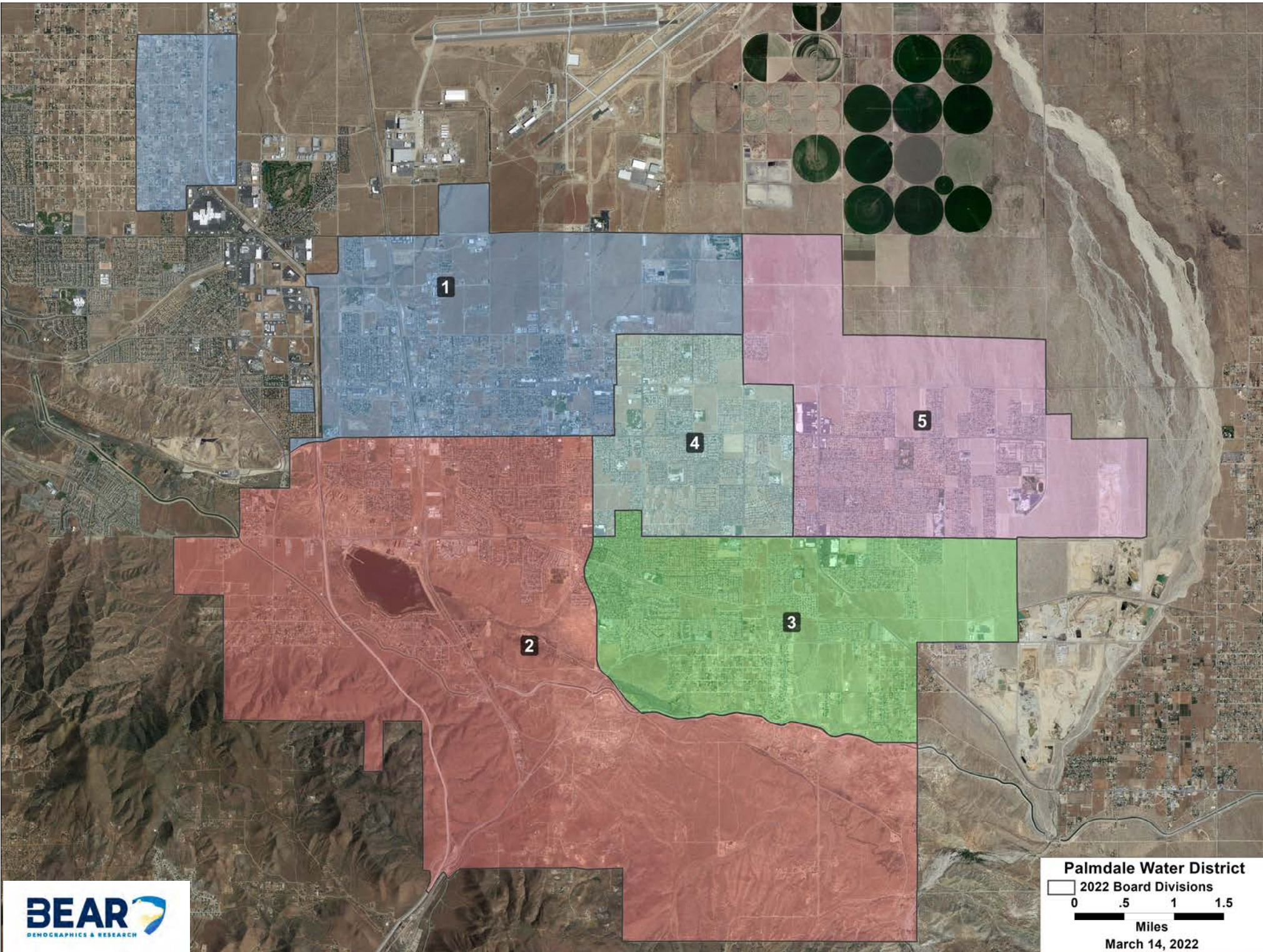


©2021 CALIPER; ©2020 HERE

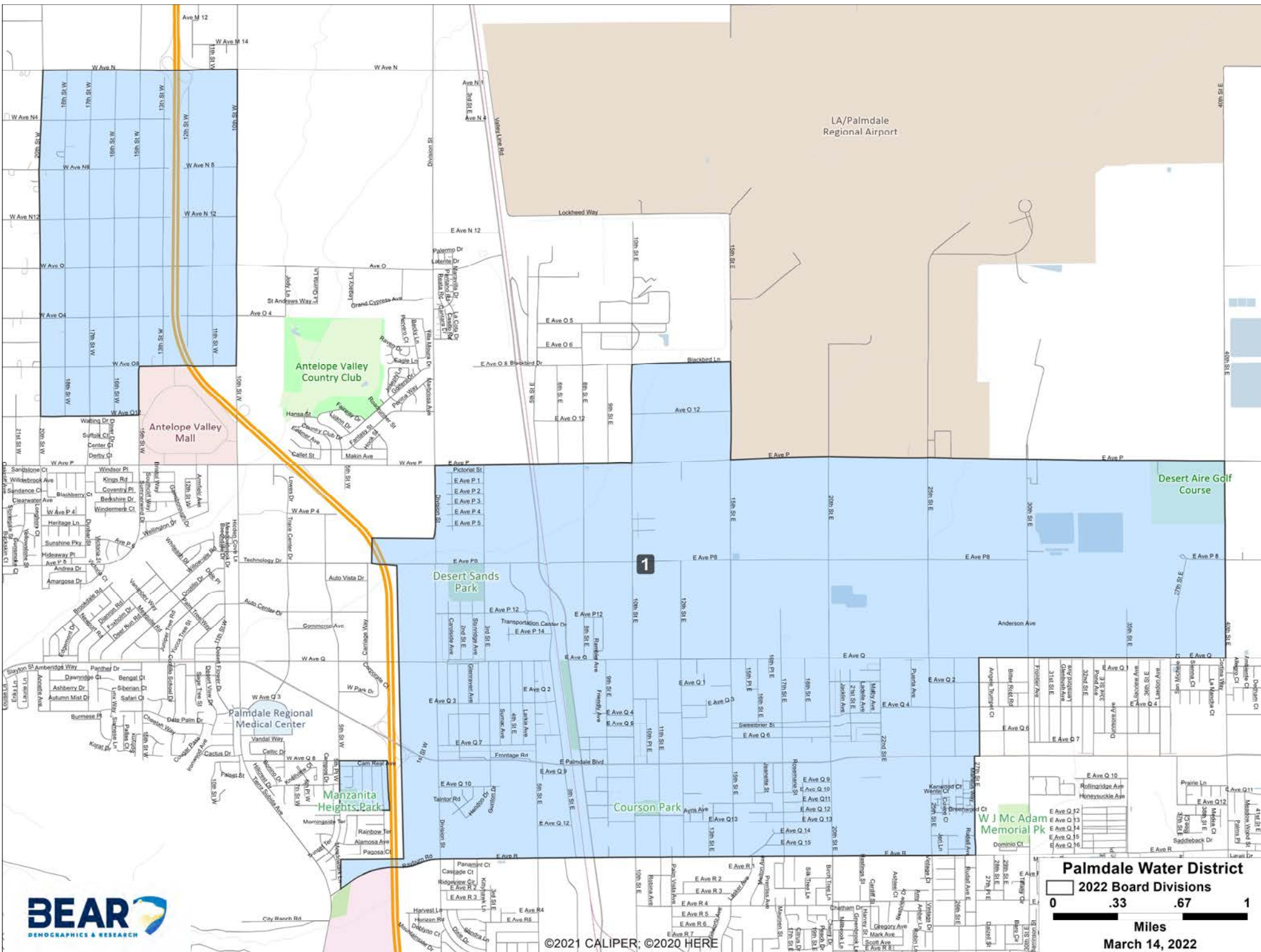




©2021 CALIPER, ©2020 HERE



Palmdale Water District
2022 Board Divisions
0 .5 1 1.5
Miles
March 14, 2022

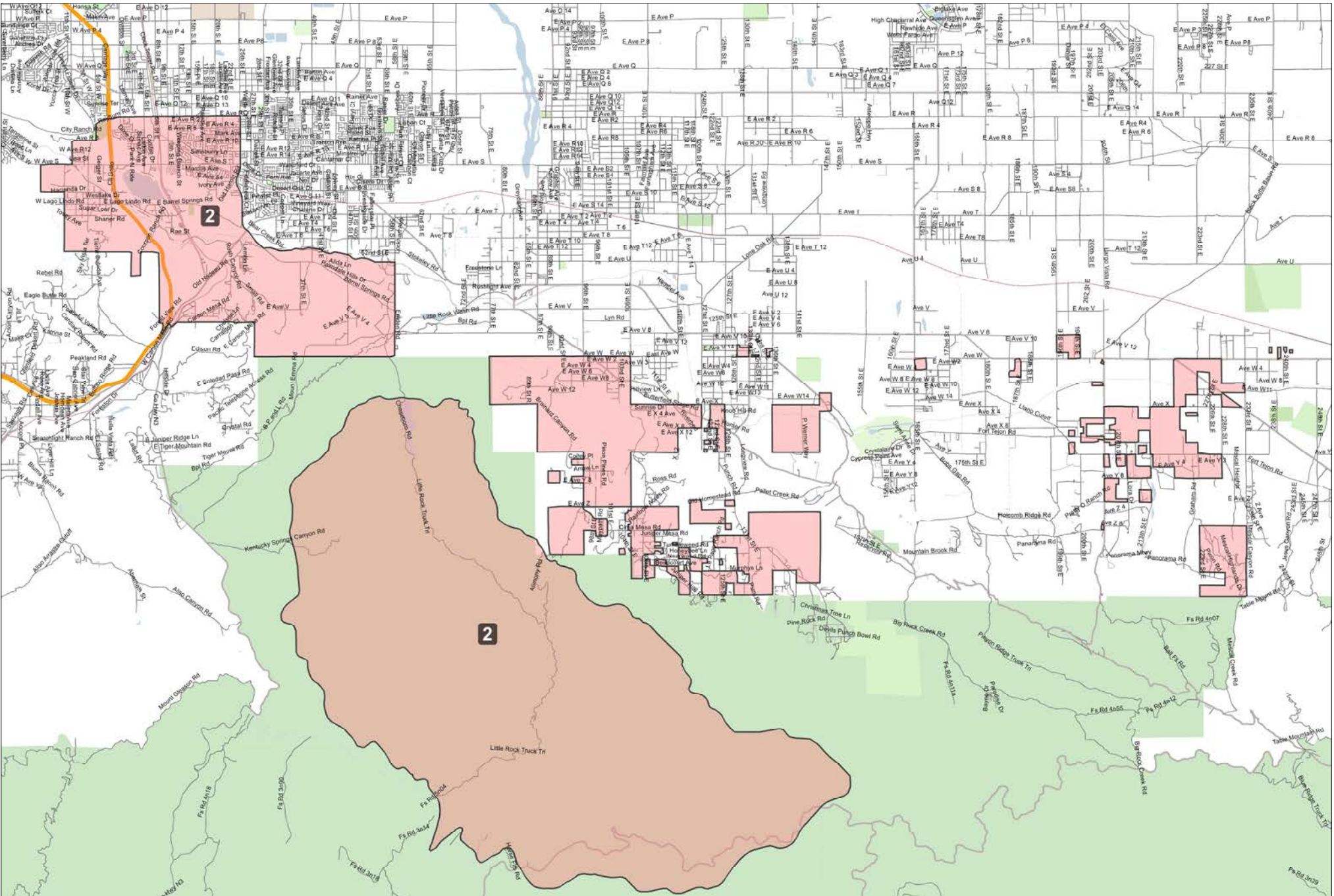


©2021 CALIPER; ©2020 HERE

Palmdale Water District
 2022 Board Divisions

0	.33	.67	1
---	-----	-----	---

Miles
 March 14, 2022

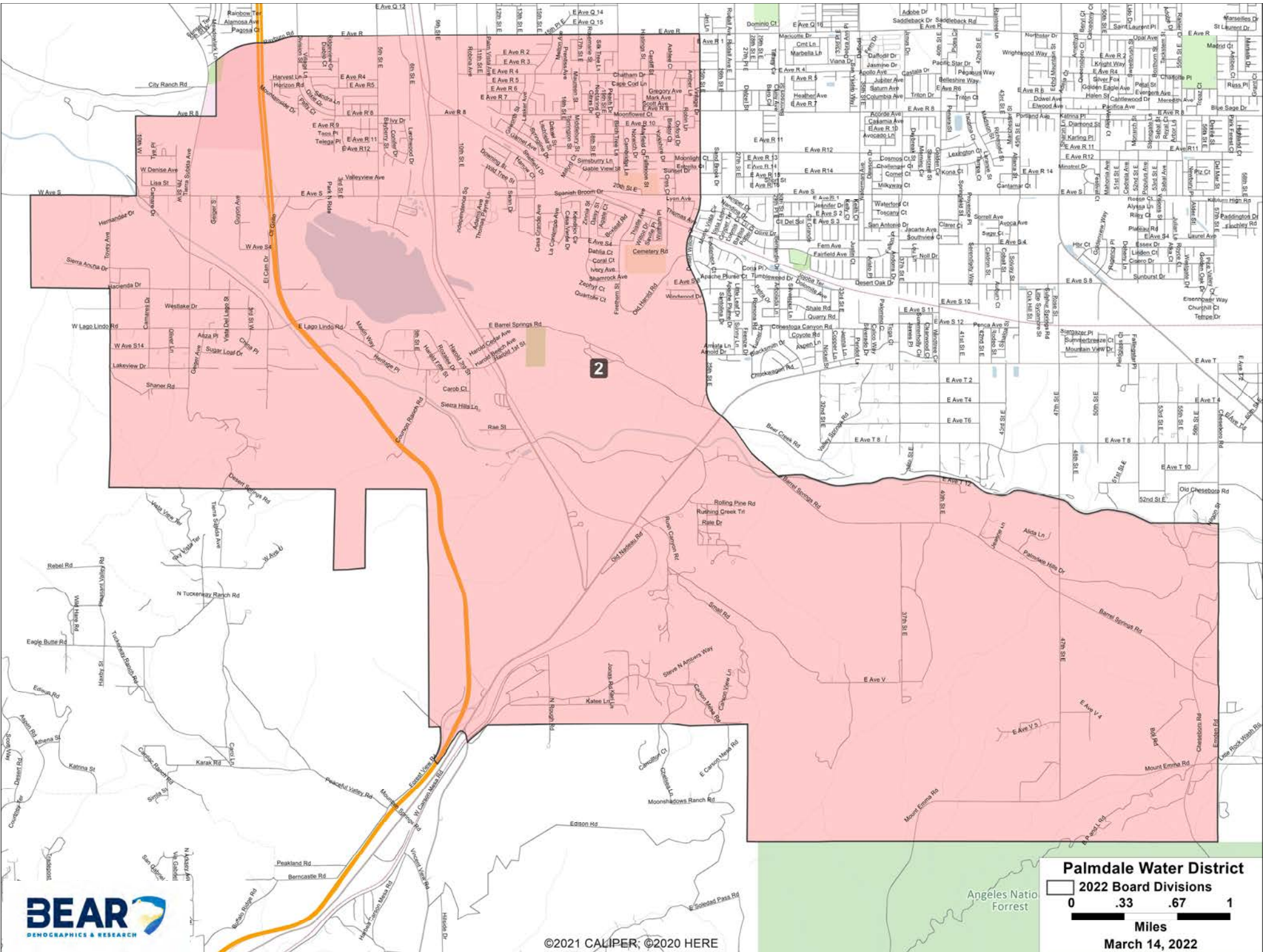


©2021 CALIPER; ©2020 HERE

Palmdale Water District
 2022 Board Divisions

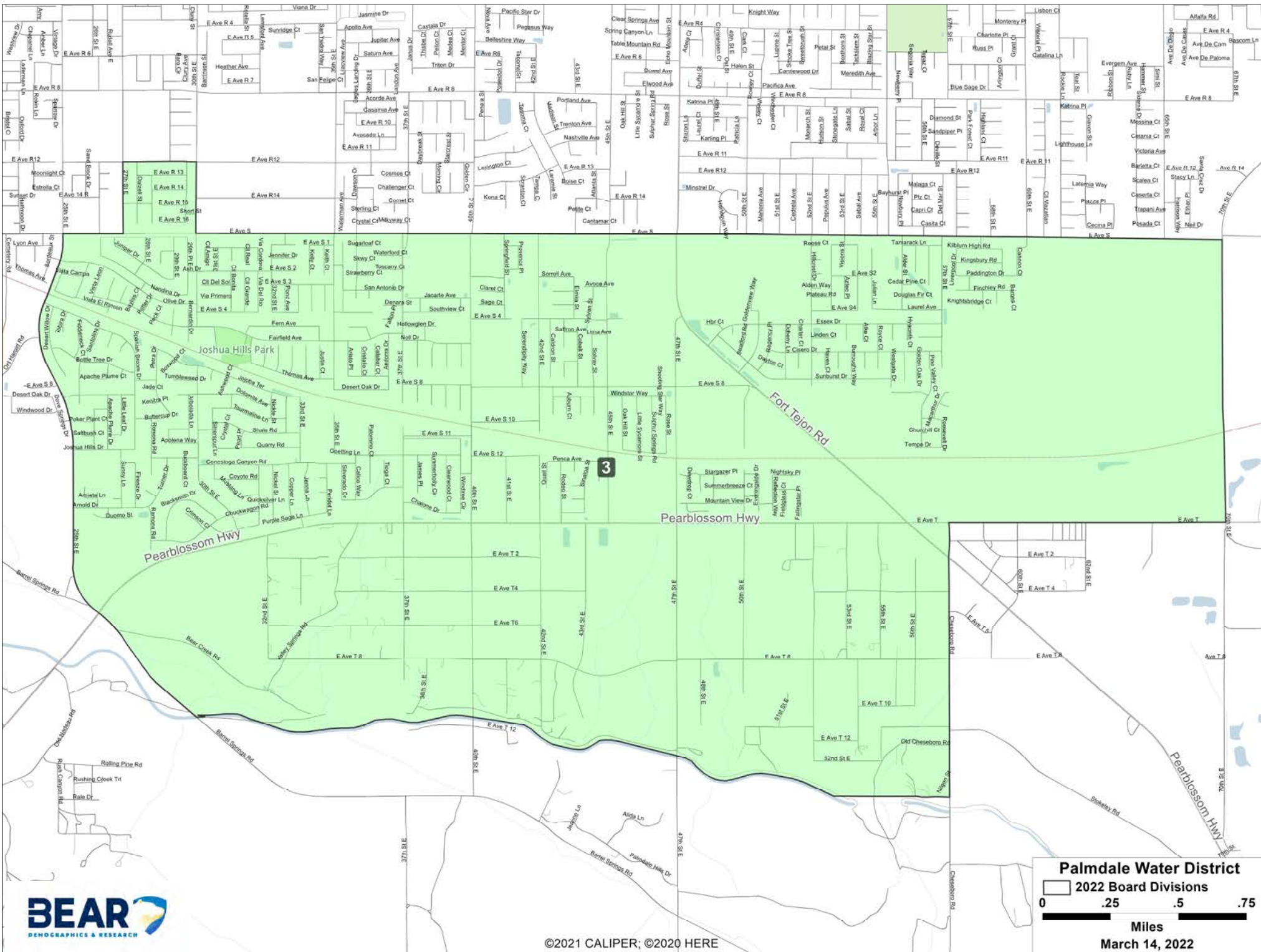
0 1.5 3 4.5
 Miles

March 14, 2022

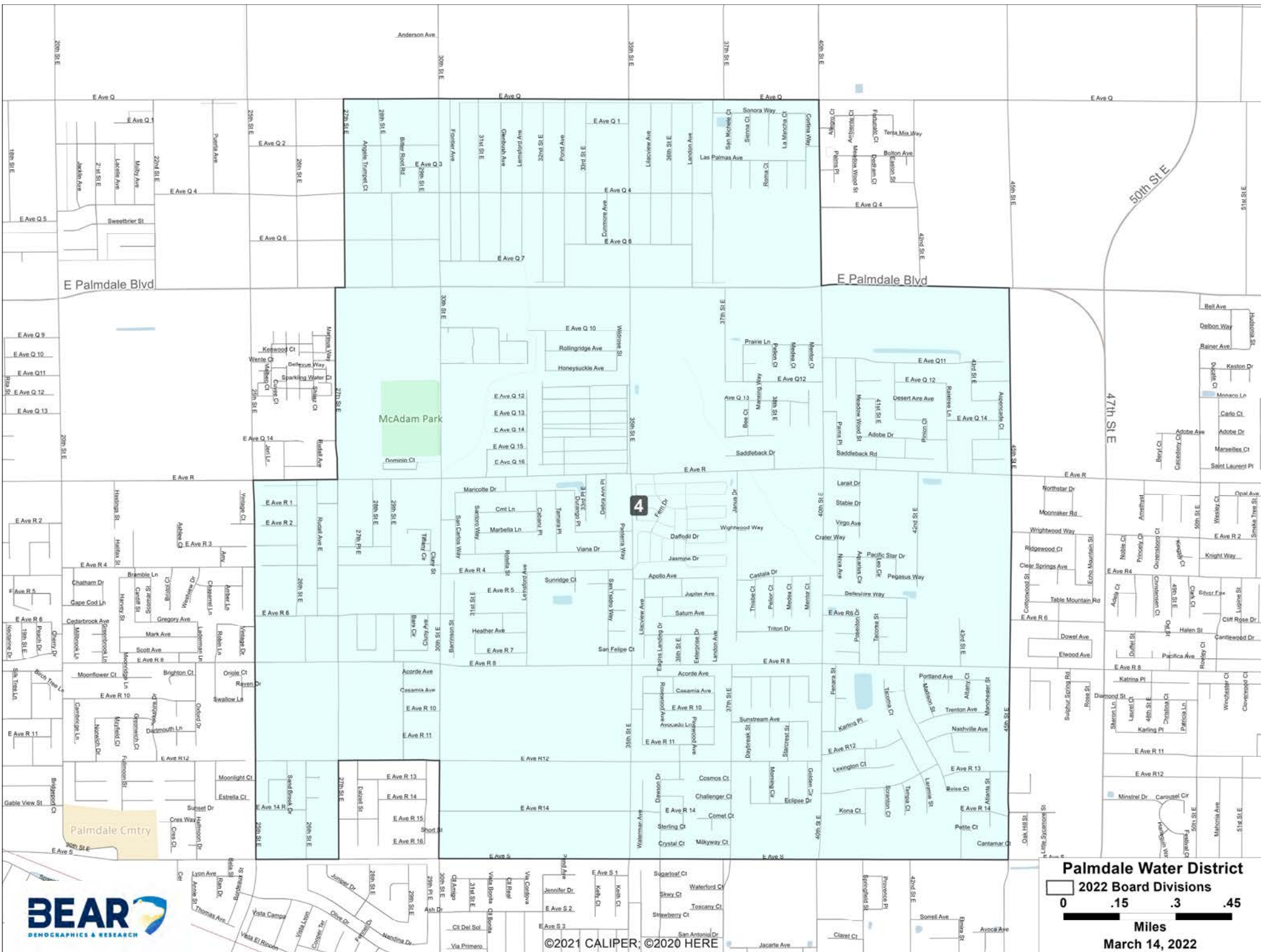


©2021 CALIPER; ©2020 HERE

Palmdale Water District
 2022 Board Divisions
 0 .33 .67 1
 Miles
 March 14, 2022

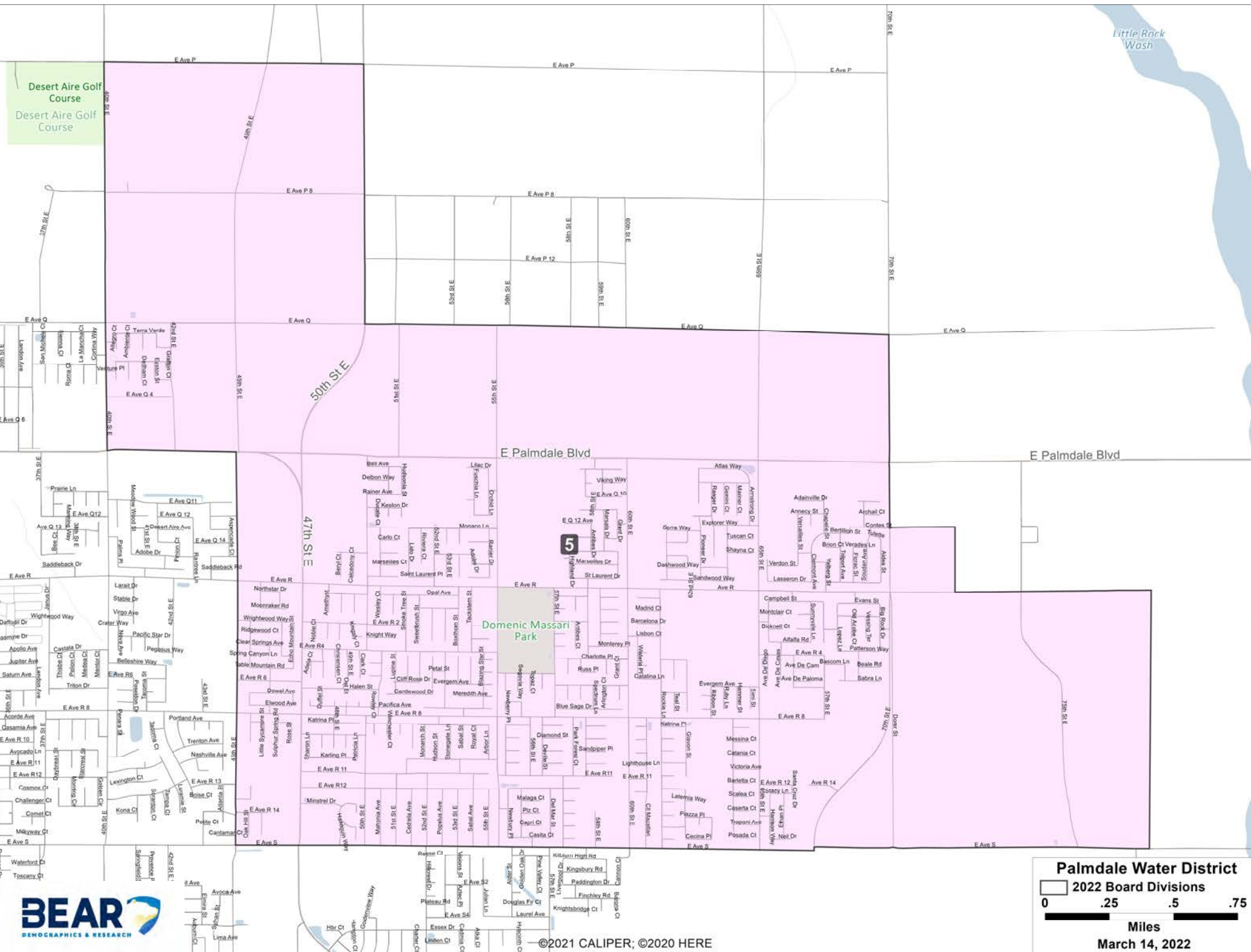


©2021 CALIPER; ©2020 HERE



©2021 CALIPER; ©2020 HERE

Little Rock Wash



©2021 CALIPER; ©2020 HERE

Palmdale Water District
 2022 Board Divisions

0 .25 .5 .75
 Miles

March 14, 2022

**Palmdale Water District
2022 Board Divisions Demographic Profile**

Board of Directors Divisions	1	2	3	4	5	Total	
Total Population (Pop) 2020 Adjusted	25,141	25,298	25,561	25,527	25,467	126,994	2020 Census State Adjusted Redistricting Data
Deviation	(258)	(101)	162	128	68		
% Deviation	-1.0%	-0.4%	0.6%	0.5%	0.3%	1.6%	
Latino	65.1%	65.2%	69.8%	74.1%	71.1%	69.1%	
White	10.5%	16.0%	13.2%	10.6%	9.1%	11.8%	
Black	19.5%	13.3%	11.8%	10.4%	14.1%	13.8%	
American Indian	0.7%	0.8%	0.4%	0.8%	0.5%	0.6%	
Asian	2.3%	2.9%	2.9%	2.4%	3.3%	2.8%	
Hawaiian, Pacific Islander	0.1%	0.2%	0.3%	0.2%	0.1%	0.2%	
Other Race	0.8%	0.8%	0.8%	0.8%	0.9%	0.8%	
Multi Minority Race	1.0%	0.9%	0.9%	0.8%	1.0%	0.9%	
Voting Age Population (VAP) 2020 Adjusted	17,047	18,485	18,768	18,265	18,139	90,704	
Latino	62.1%	62.1%	67.1%	71.4%	69.2%	66.4%	
White	13.0%	19.0%	15.4%	12.6%	10.5%	14.1%	
Black	19.6%	13.0%	11.9%	10.6%	14.2%	13.7%	
American Indian	0.8%	0.9%	0.5%	0.9%	0.5%	0.7%	
Asian	2.8%	3.3%	3.2%	2.8%	3.8%	3.2%	
Hawaiian, Pacific Islander	0.1%	0.2%	0.3%	0.3%	0.1%	0.2%	
Other Race	0.8%	0.8%	0.8%	0.8%	0.8%	0.8%	
Multi Minority Race	0.9%	0.8%	0.8%	0.7%	1.0%	0.8%	
Citizen Voting Age Population (CVAP) 2019	12,034	13,786	14,352	13,404	13,759	67,334	2019 ACS CVAP Tabulation
Latino	54.6%	58.0%	58.4%	62.1%	62.0%	59.1%	
White	18.8%	24.0%	21.1%	21.6%	16.2%	20.4%	
Black	21.5%	12.1%	16.3%	10.8%	17.5%	15.5%	
Asian	3.0%	4.1%	2.9%	5.0%	3.9%	3.8%	
All Other	2.2%	1.8%	1.4%	0.5%	0.5%	1.2%	