

Sept
26



Palmdale Regional Water Augmentation Program

Project Update



New Project Name and Logo



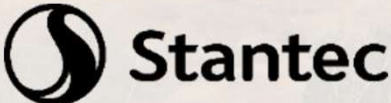
- Staff held meetings with outreach consultant to development program name
- Selected name
- Outreach consultant prepared logo options to represent area and project
- Name recognition from other similar projects
- Recommended for approval by Outreach Committee and Staff



JUN
14



Project Update





Pure Water Antelope Valley (AV) Status

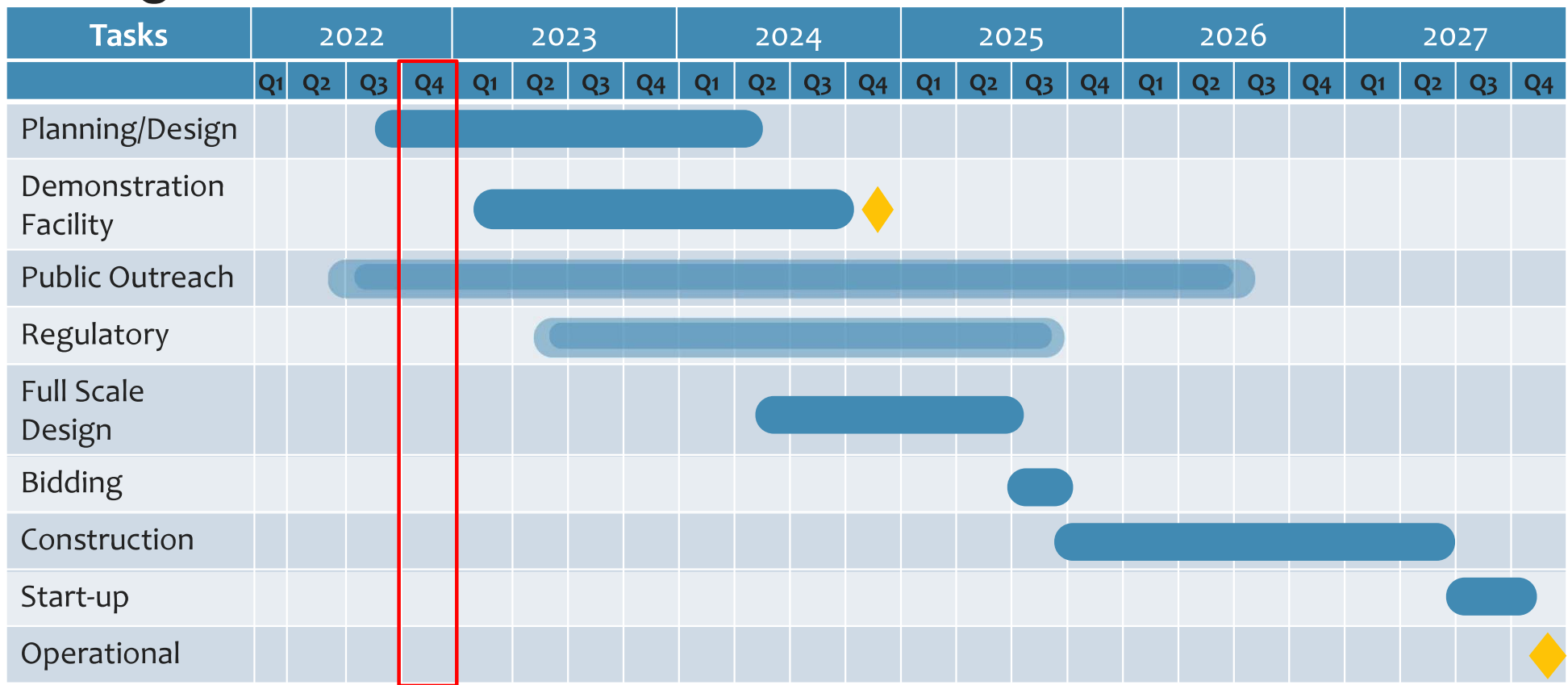
PLANNING AND DEMONSTRATION FACILITY

- Hired Consultant through RFP Process (February 2022)
- Program Kick off (April 2022)
- Planning (May 2022 – December 2023)
- Outreach (Name and Logo, August 2022)
- Funding (Identification and Strategy, June 2022)
- Demonstration Facility Siting and Layout (Today)





Program Timeline



TIMELINE - WHERE ARE WE HEADED

Tertiary Water Use Options Costs & Evaluation

Optimizing the use of tertiary water for Palmdale.

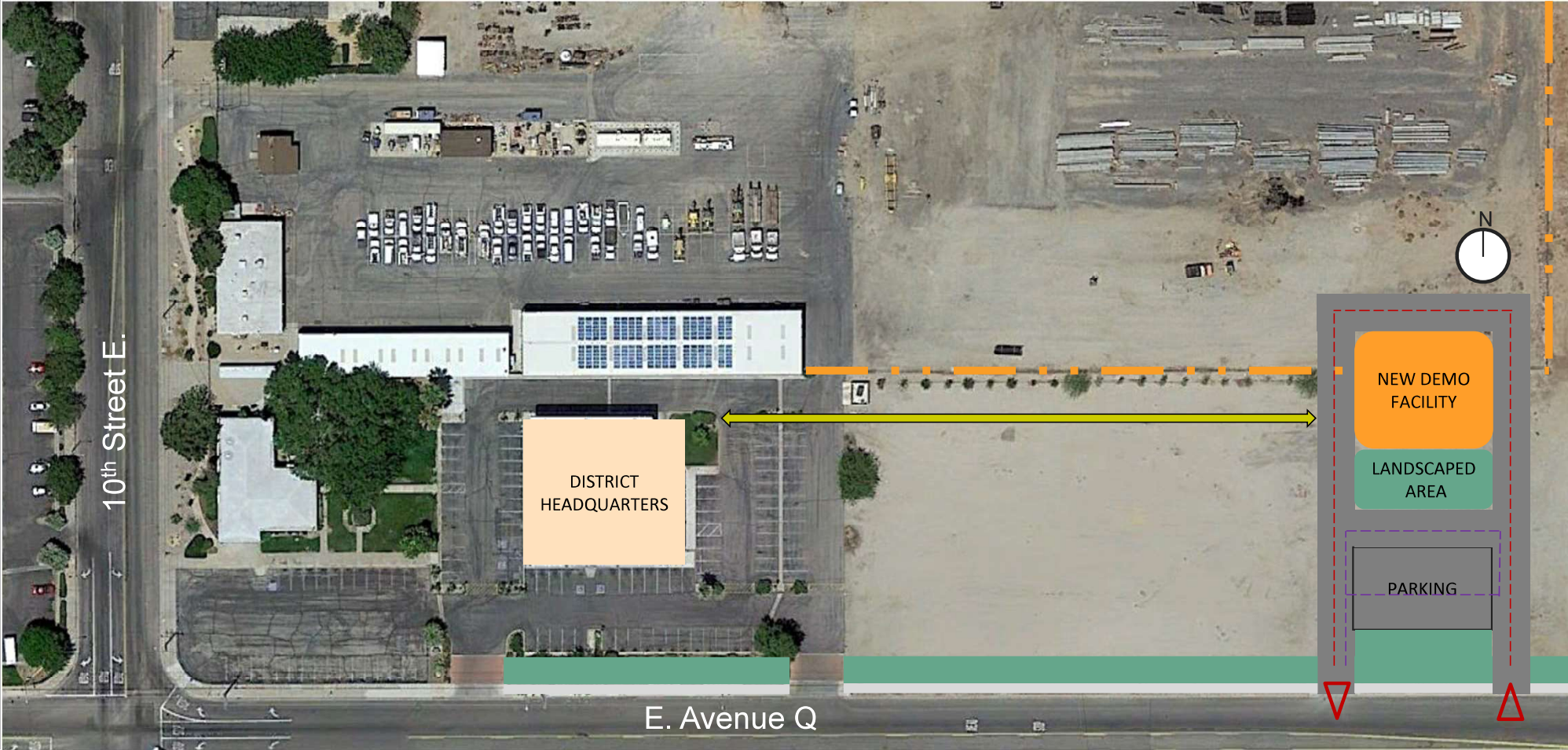
Options for Utilizing Tertiary Water	AWTF and Injection	Irrigation (purple pipe)	Recharge and Recovery
Volume (afy)	5,325	1,725	4,000
Cost (\$/afy)	\$1,710	\$2,600	\$3,160

Benefits of Advanced Treated Tertiary Water

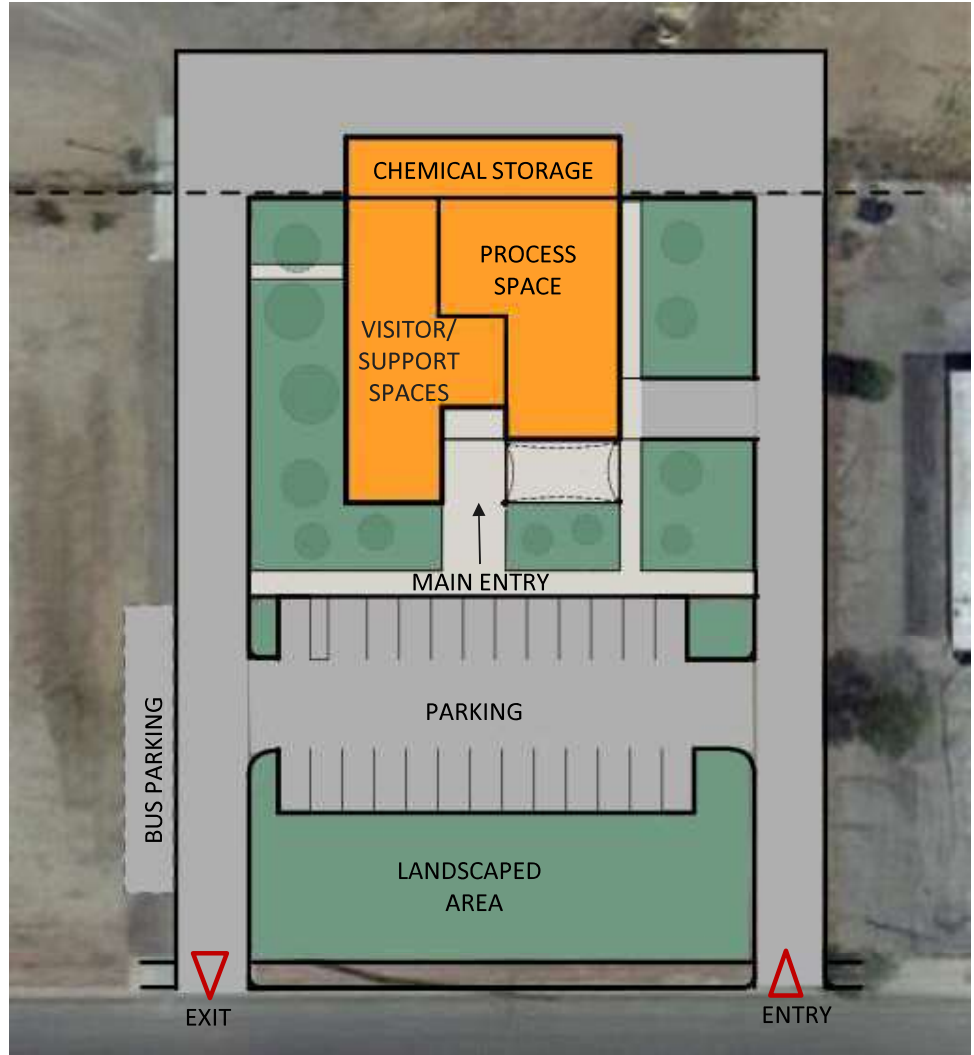
- Larger volume of recycle water used
- Improved aquifer water quality and help with aquifer health
- Less infrastructure (pipelines, booster stations, tanks) required
- Smaller environmental impact
- Less loss from evaporation
- No required imported water for blending
- No additional imported water purchase costs
- More drought resilient
- Local Control
- Usage not impacted by season (irrigation)



Site Plan



Site Layout

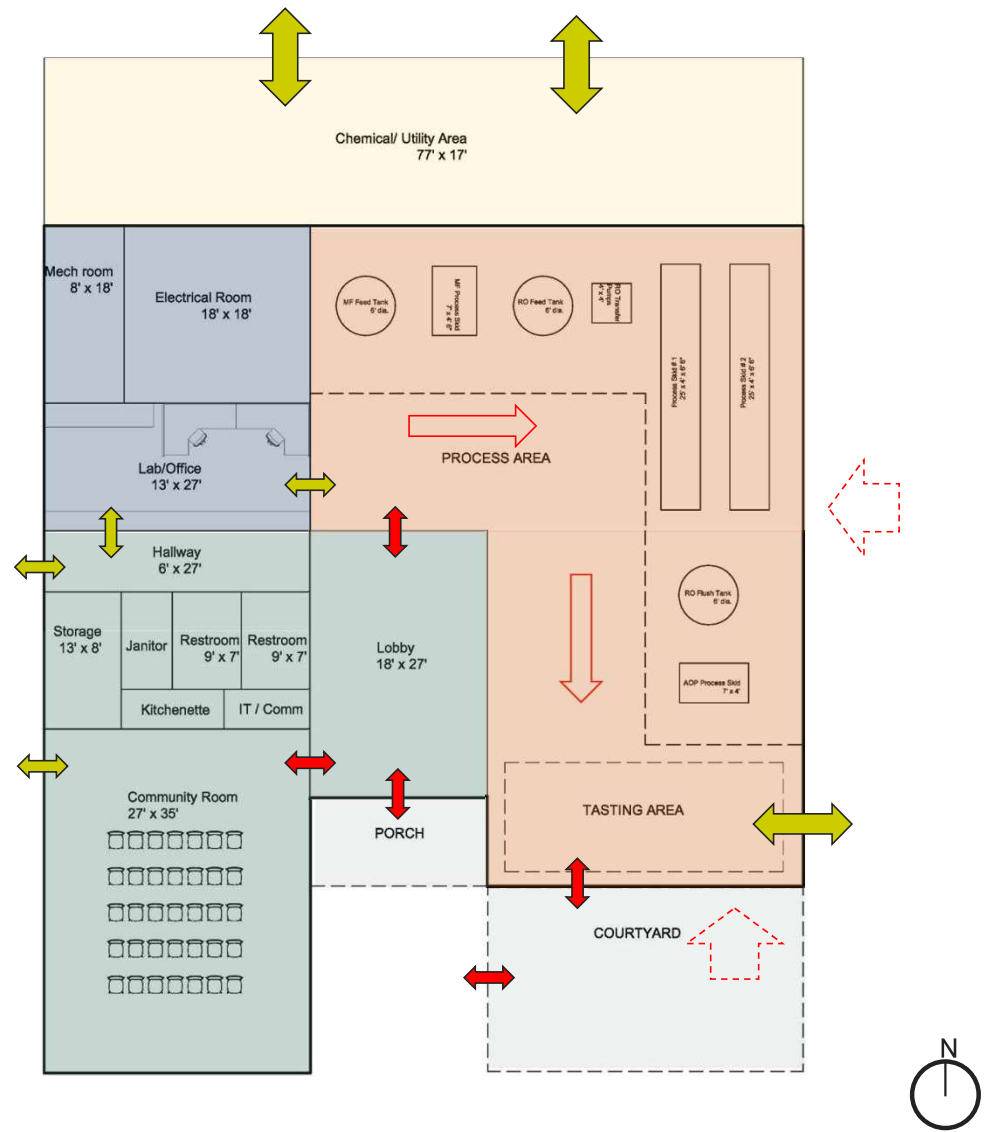


Layout Building

7,450 SF \ 5,490 SF INDOOR

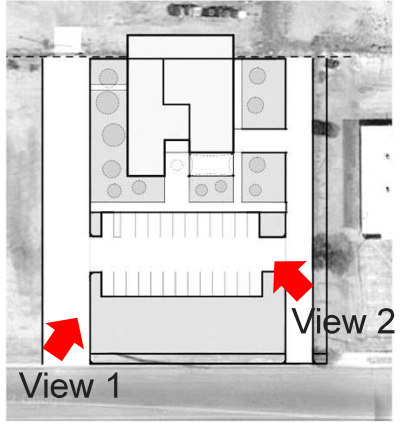
- Central Lobby Connects all Spaces
- L-shaped Process Space and Tour Path with Tasting Area
- Views Into Process Space from Lobby and Lab/Office
- Partial Views into Process Space from Exterior Windows
- Secure Chemical Storage behind Existing Fence
- Fenced Courtyard Connected to Tasting Area

↔ Visitor Access
 ↔ Staff Access





Building Conceptual View



View 1

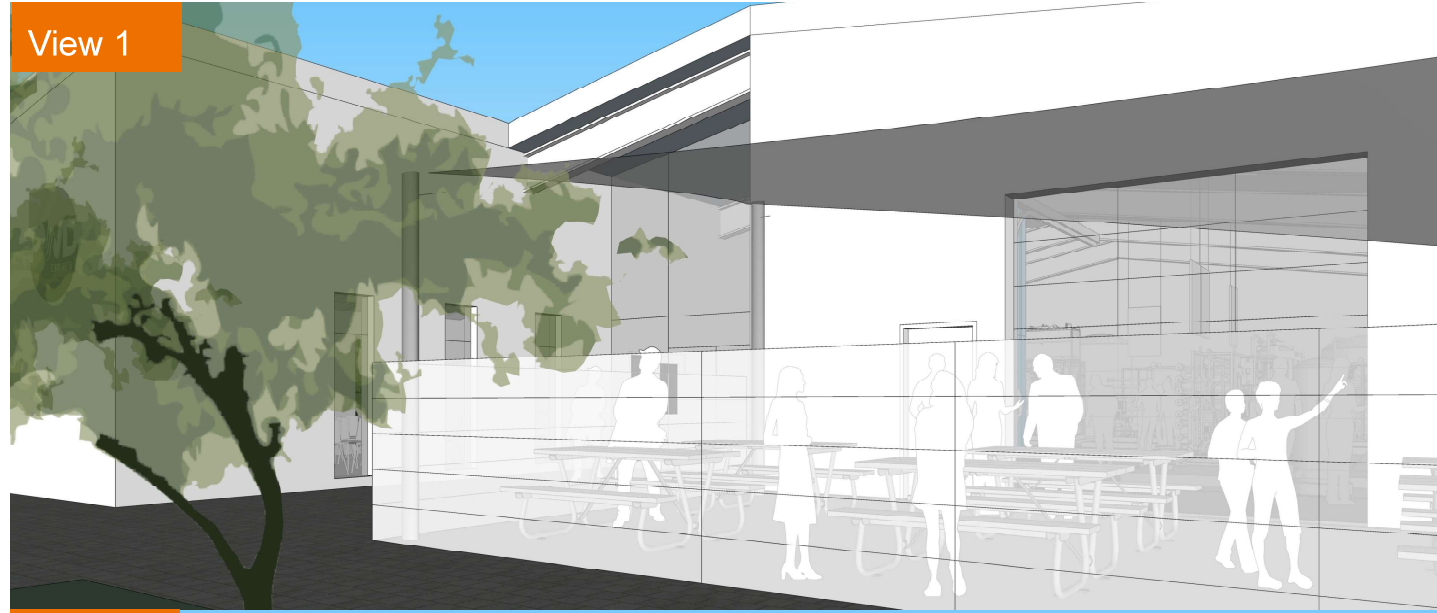
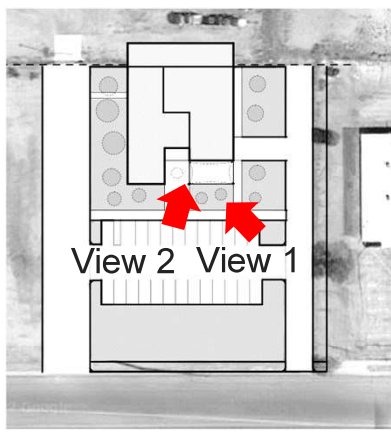


View 2





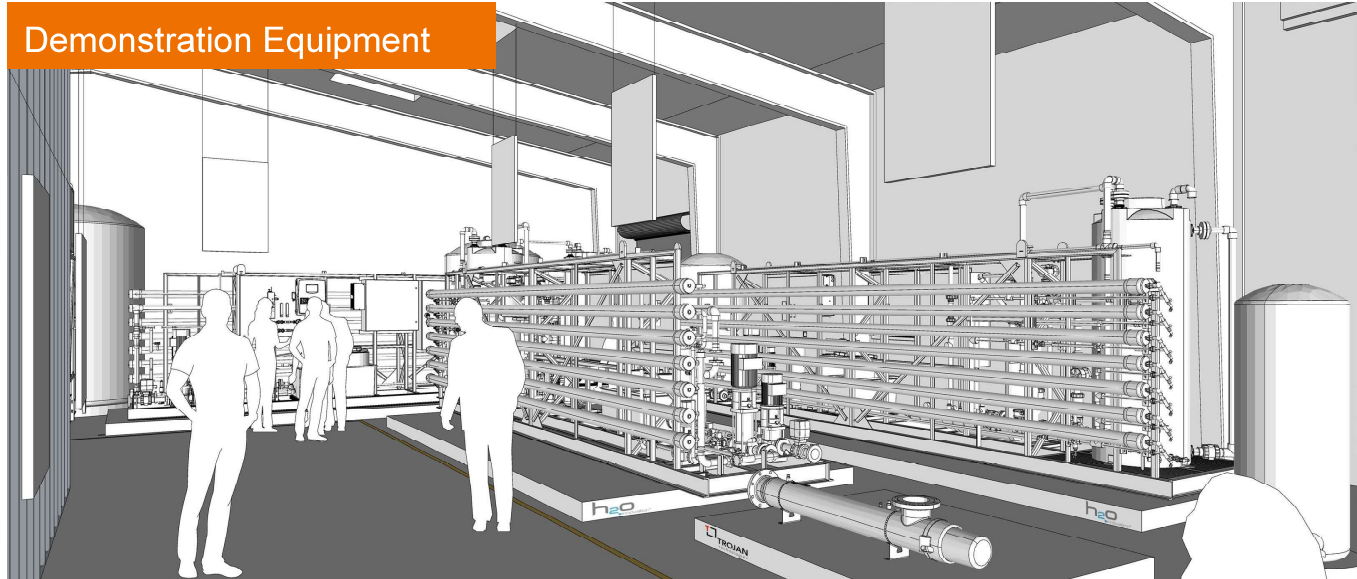
Building Conceptual Exteriors



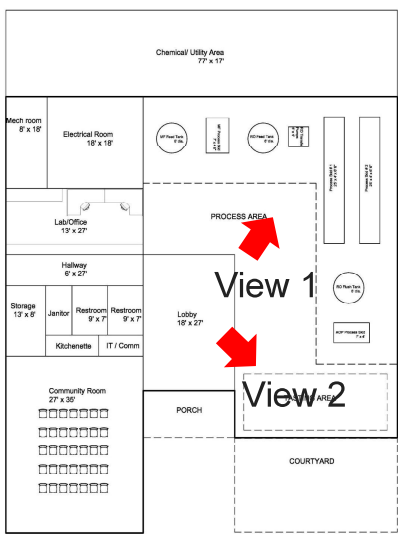
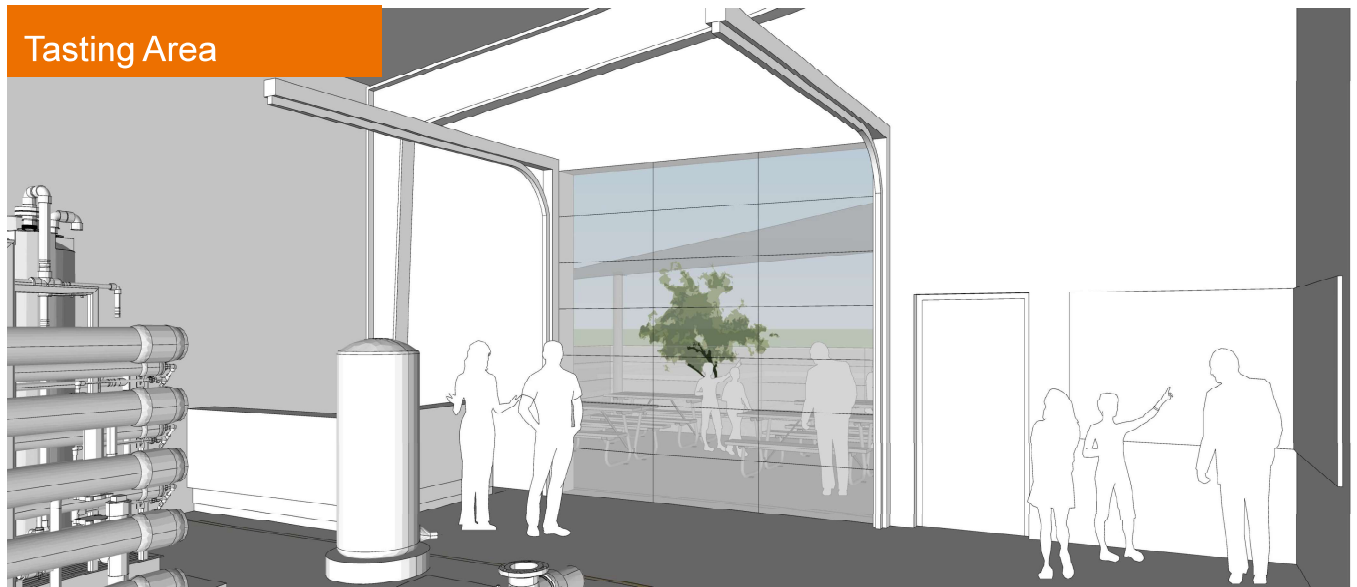


Interior Views

Demonstration Equipment



Tasting Area



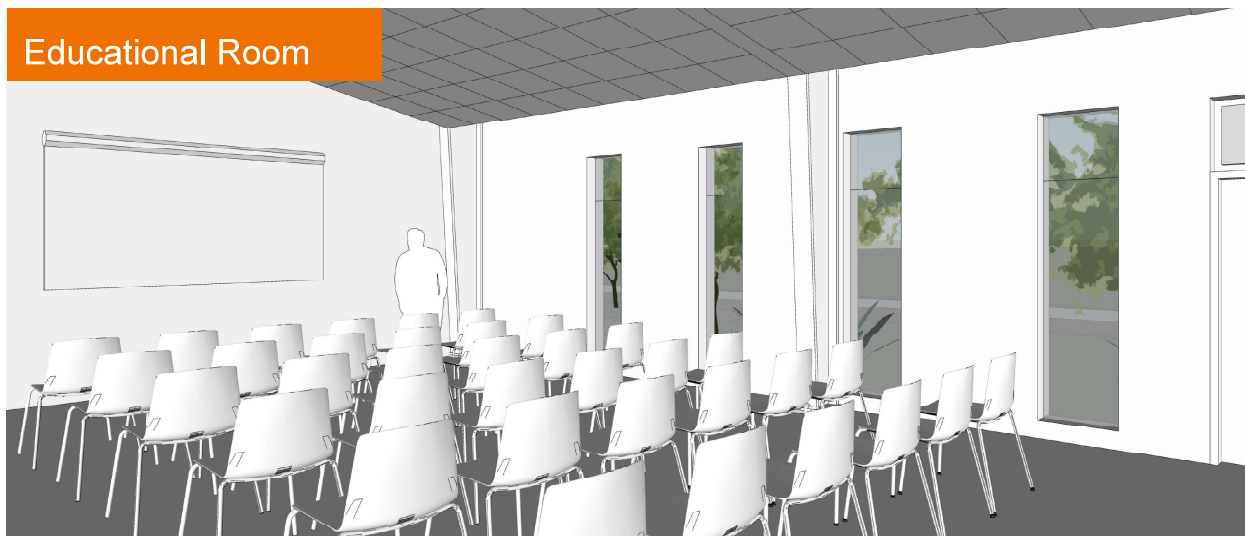
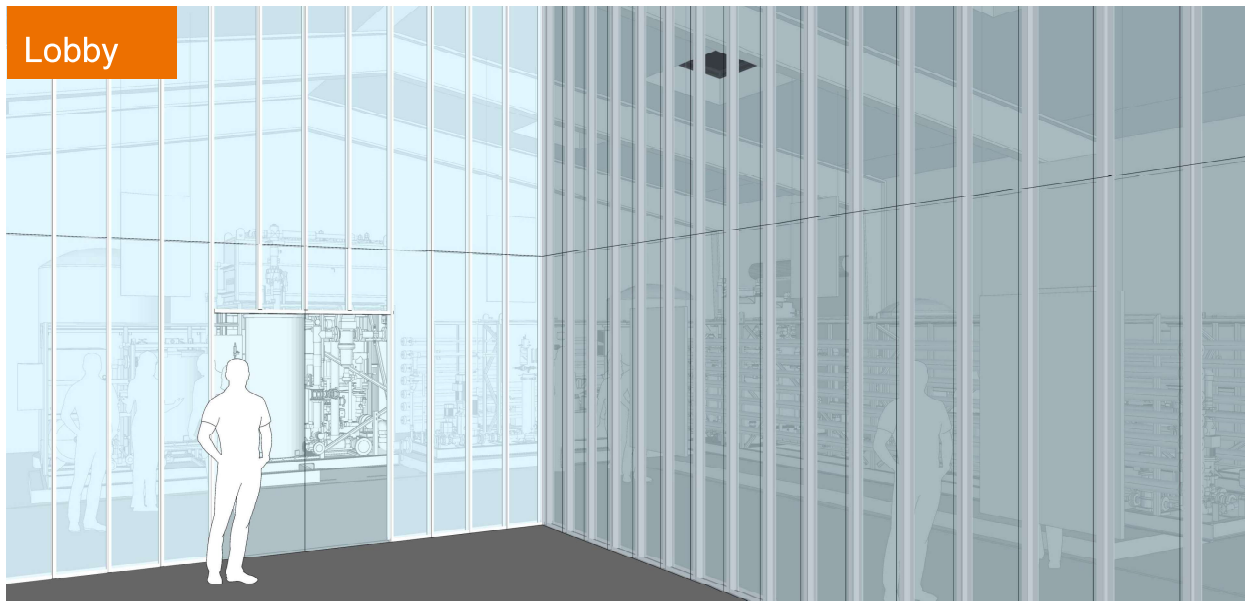
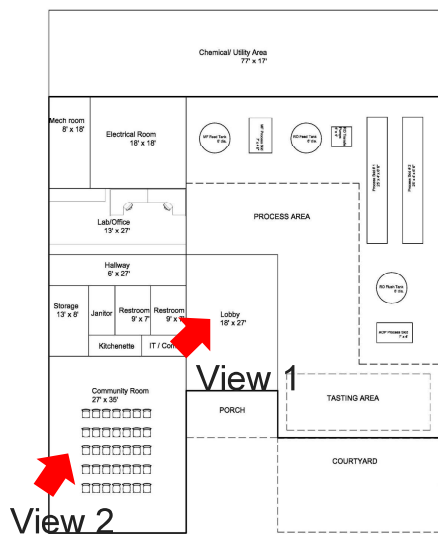


mua architects

PURE WATER AV- DEMONSTRATION FACILITY



Interior Views





Questions?

