



STATE WATER  
CONTRACTORS  
FOUNDED 1982

# Delta Conveyance Project

## *Update AVSWCA*

Jennifer Pierre, General Manager  
State Water Contractors  
October 13, 2022

[www.SWC.org](http://www.SWC.org)



# Essential to Climate Adaptation Strategy



- California faces a future of water instability, more rain, less snow, and more frequent extreme events like drought and flood.
- The Delta Conveyance Project (DCP) protects against future water supply losses caused by climate change, sea level rise and earthquakes.
- The Delta Conveyance Project helps ensure that the State Water Project (SWP) can capture, move and store water by making the most of big, but infrequent, storm events.

# Potential Component of Drought Relief

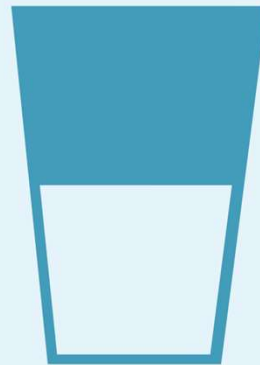
**MISSED OPPORTUNITY:** If the DCP were operational in 2021, we could have captured and moved 236,000 acre-feet of water into the San Luis Reservoir.

**236,000 acre-feet**



**Water**

=



over **2.5 million**  
people for one year

or



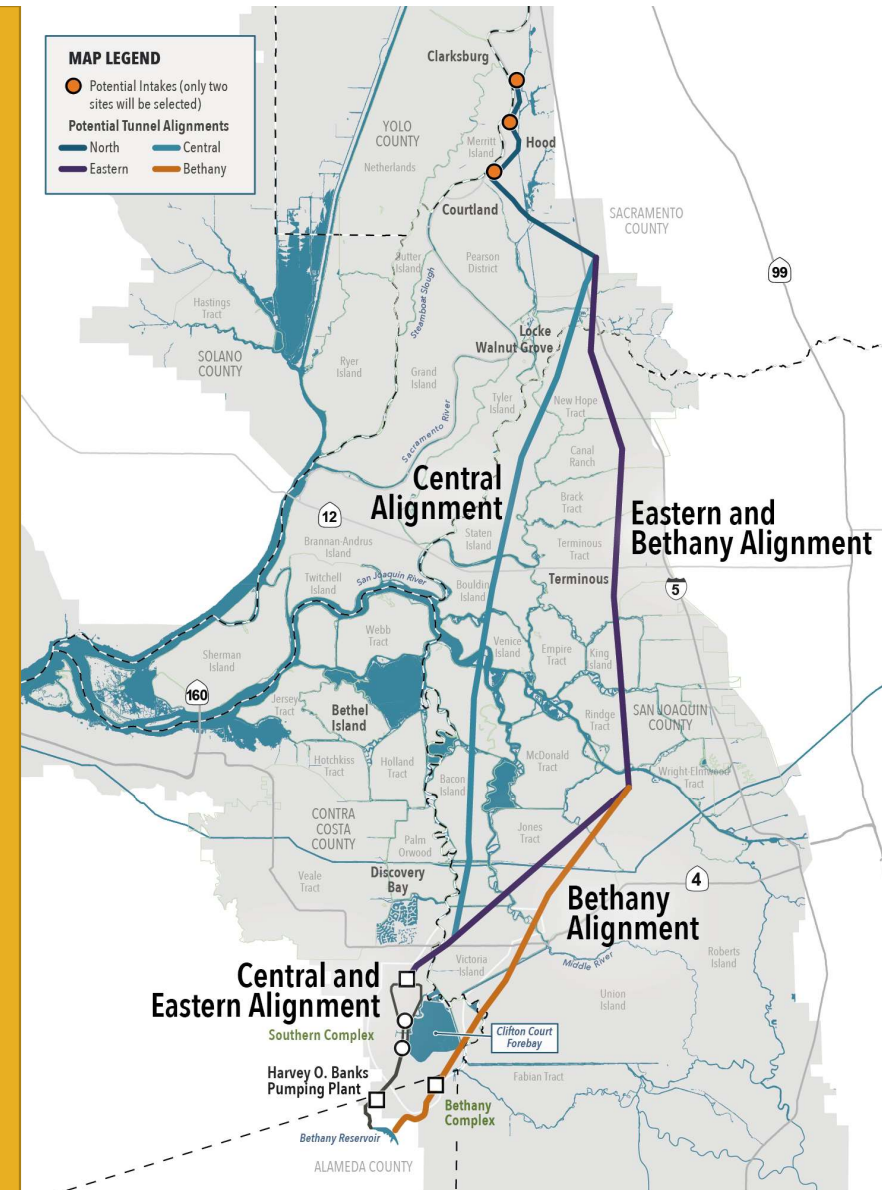
nearly **850,000**  
households for one year

# Prudent Public Policy

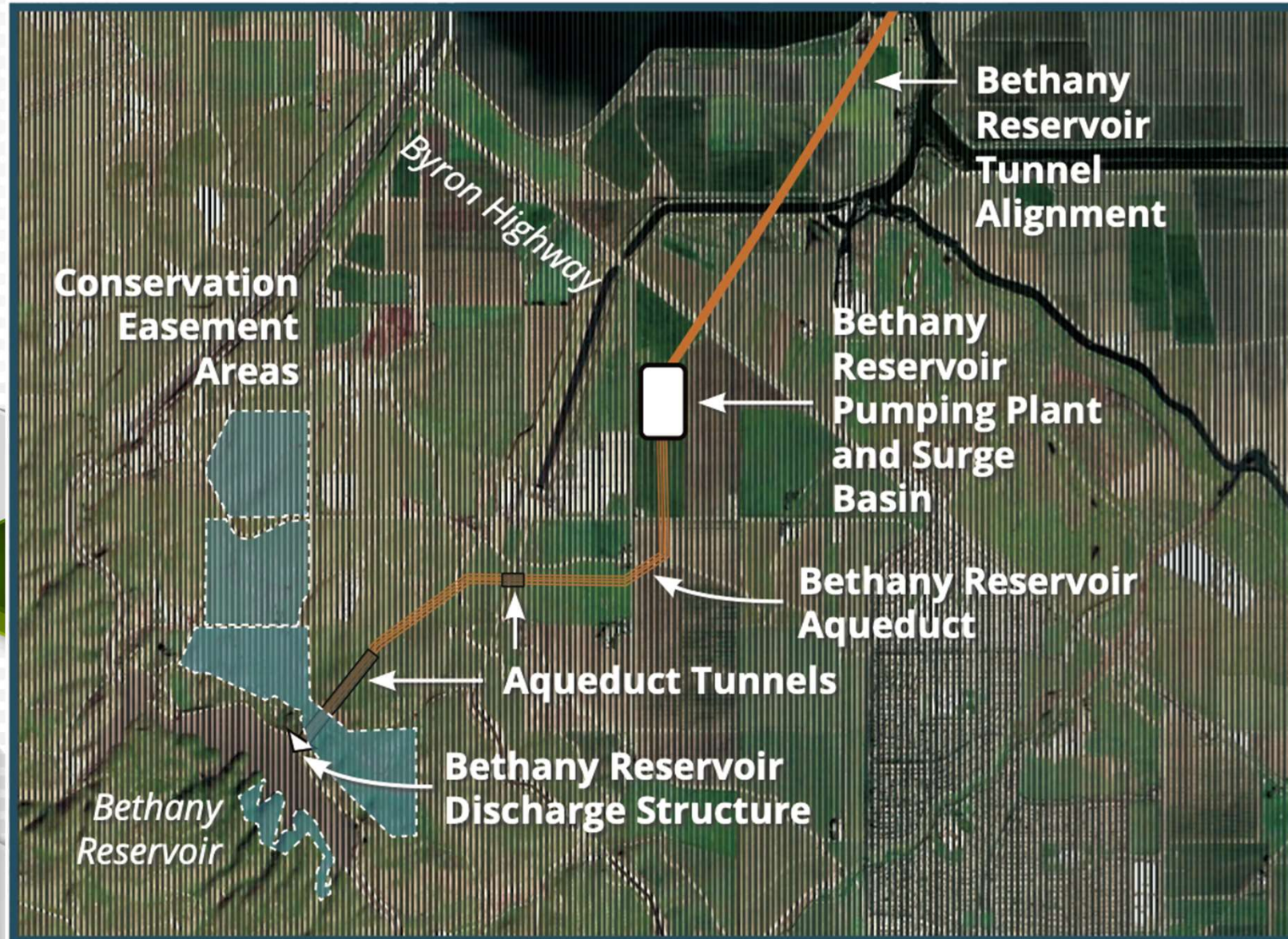
- 27 million Californians rely on the State Water Project
  - That's 1 in 12 Americans, including about 6 million disadvantaged community members
- Communities must have confidence in the stability and efficiency of the State Water Project in the face of climate change.
- Local resiliency requires a stable SWP
  - Recycling, groundwater management, storage and conservation
- Water managers need functional water infrastructure to meet all water supply needs, including health and safety, economy, environment and water equity.

# Proposed Project (Bethany Alignment)

- Proposed Project
  - Bethany Alignment
  - 6,000 cfs
  - 2 intakes
  - Pumping plant connects the tunnel directly to Bethany Reservoir
- Alternatives
  - Central or Eastern alignment
  - 1, 2 or 3 intakes
  - 3,000, 4,500, 6,000 or 7,500 cfs
  - Southern complex with pumping plant and forebay



# Bethany Alignment Rendering



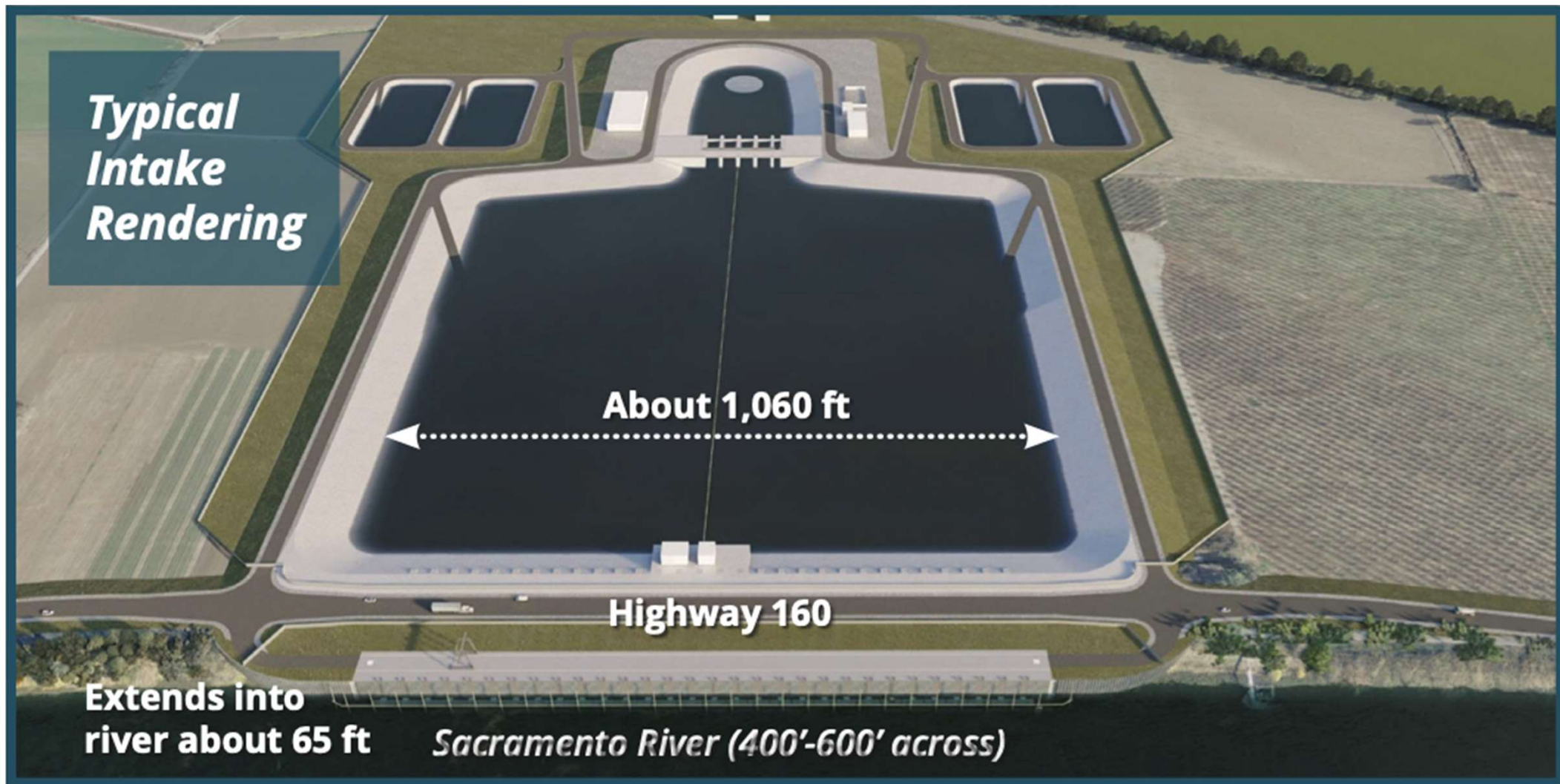
**Typical  
Intake  
Rendering**

**About 1,060 ft**

**Highway 160**

**Extends into  
river about 65 ft**

*Sacramento River (400'-600' across)*

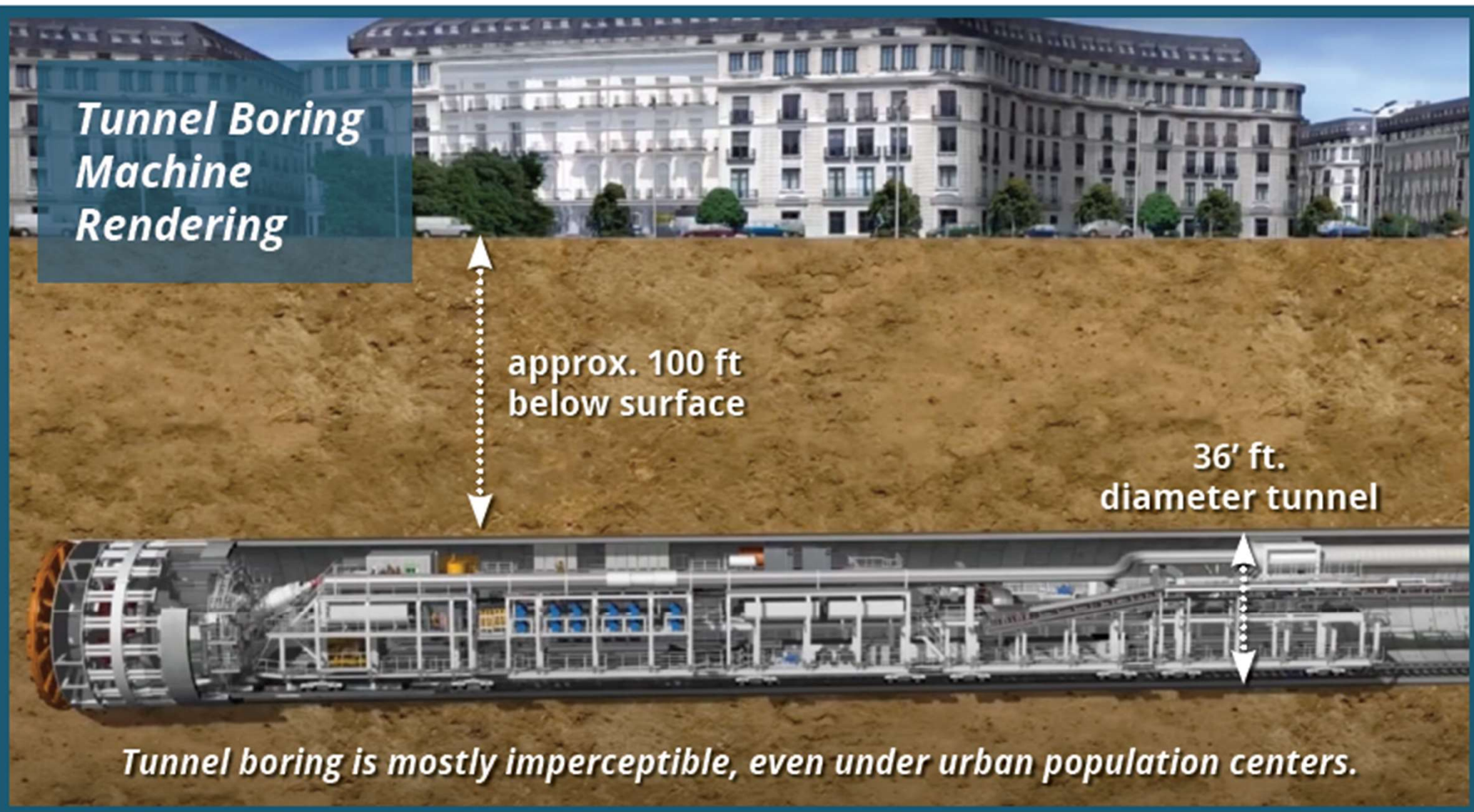


## *Tunnel Boring Machine Rendering*

approx. 100 ft  
below surface

36' ft.  
diameter tunnel

*Tunnel boring is mostly imperceptible, even under urban population centers.*





# 3 Years to Meet Gov. Newsom's Mission

## *A Very Different Project*

- Changing from 2 tunnels to 1 tunnel opened the door to many design and engineering innovations
- Project downsized, rerouted, redesigned and responsive to community needs
- Fresh look at everything. Built on, but not constrained by, previous work
- Considered ways to minimize noise, traffic, power needs, aesthetic effects, boating and waterway effects, land disturbance



# Design Objective: Minimize Project Effects

---

## Examples:

- Launch shafts moved away from intakes
- Proposed route avoids the central Delta
- Acreage needed to store tunnel material has been minimized
- Avoid using Highway 160
- Undergrounding power near sandhill crane habitat
- No new barge landings
- No new forebays



# Robust Community Engagement



- Environmental Justice/Disadvantaged Community focus using dedicated consultant and based on guidance about best practices from statewide experts
- Extensive coordination with Tribes
- First-of-its-kind Tribal impact analysis and mitigation
- Delta community engagement to obtain local insight during conceptual design/engineering to avoid and minimize impacts

# Committed to a Comprehensive Community Benefits Program

Acknowledge and address the reality that impacts are local to the Delta, but direct project benefits accrue to other parts of the state.

- Overarching Delta Fund
- Leave-behind infrastructure
- Targeted hiring, job training and business participation expectations
- Open to town-by-town community benefits agreements



# Draft EIR Milestone Approaching



Draft Environmental Impact Report released July 27, 2022

- Public comment period extended to December 16, 2022.
- Draft EIS from Corps to follow for shorter review period
- Final EIR in fall 2023



Questions?