



**PALMDALE WATER DISTRICT**  
A CENTURY OF SERVICE

# Engineering Department

Scott Rogers, P.E.  
Engineering Manager

Board Meeting  
Nov. 28, 2022



# Great Team with a Big Mission



Inspectors



Engineering Technicians



Management Analyst



Engineers

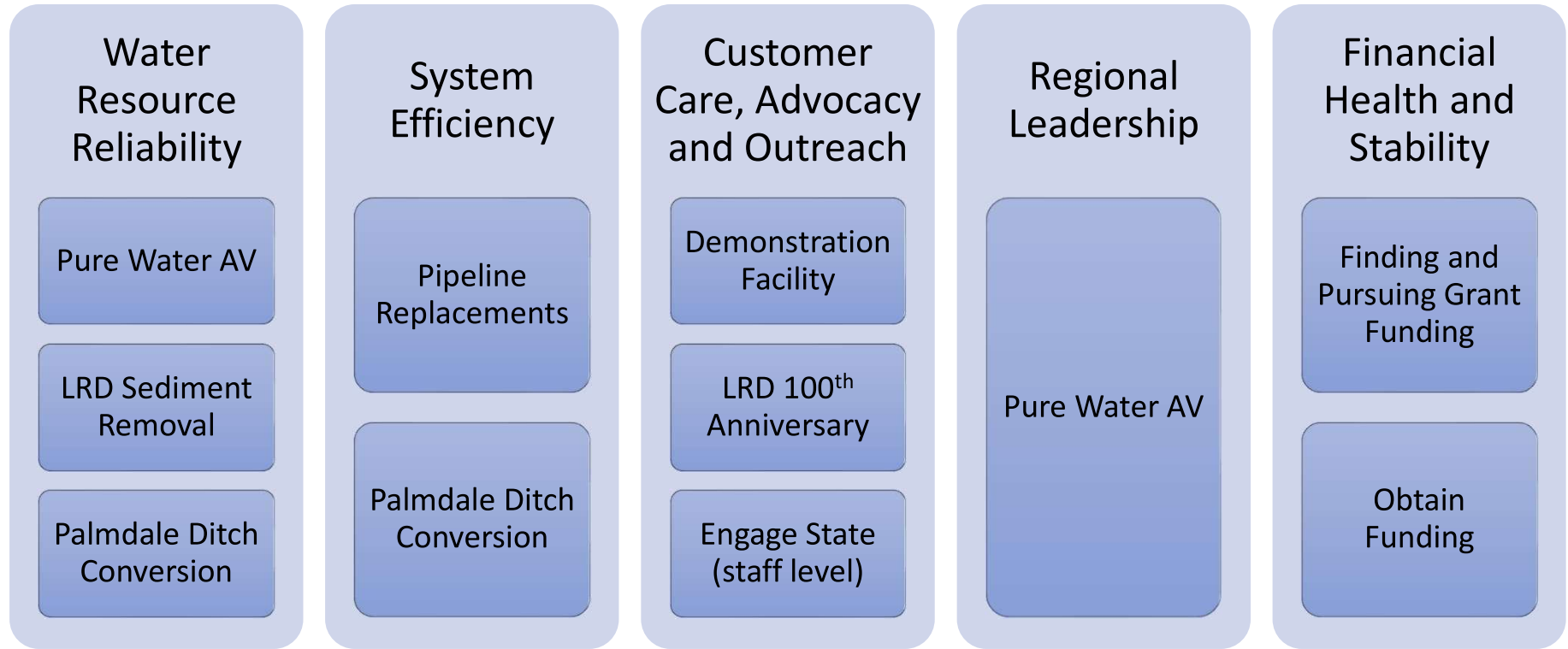


Cross Connection



PALMDALE WATER DISTRICT  
A CENTURY OF SERVICE

# Strategic Initiative Implementers



# The Engineering Projects

5-year Capital  
Improvement  
Plan

Littlerock Dam  
Sediment  
Removal

Pure Water AV

Palmdale  
Ditch  
Conversion



# Pipeline Replacements



5<sup>th</sup> Street and Ave Q-4



Ave P and 10<sup>th</sup> Street  
Connection at Well 15



Ave P-12 and 3<sup>rd</sup> Street



Ave Q and Carolside





# Littlerock Dam Sediment Removal



**PALMDALE WATER DISTRICT**  
A CENTURY OF SERVICE

# Standard, Guidelines and Enforcement

- Establish the standard requirements and guidelines for District facilities
- Ensure compliance with the standards and plans
- Ensure cross-connection requirements
- Planning for the future





# Engineering Technicians



DESIGN PIPELINE  
AND OTHER  
PROJECTS



REVIEWS CITY  
PROJECT AND  
DEVELOPMENT  
PLANS



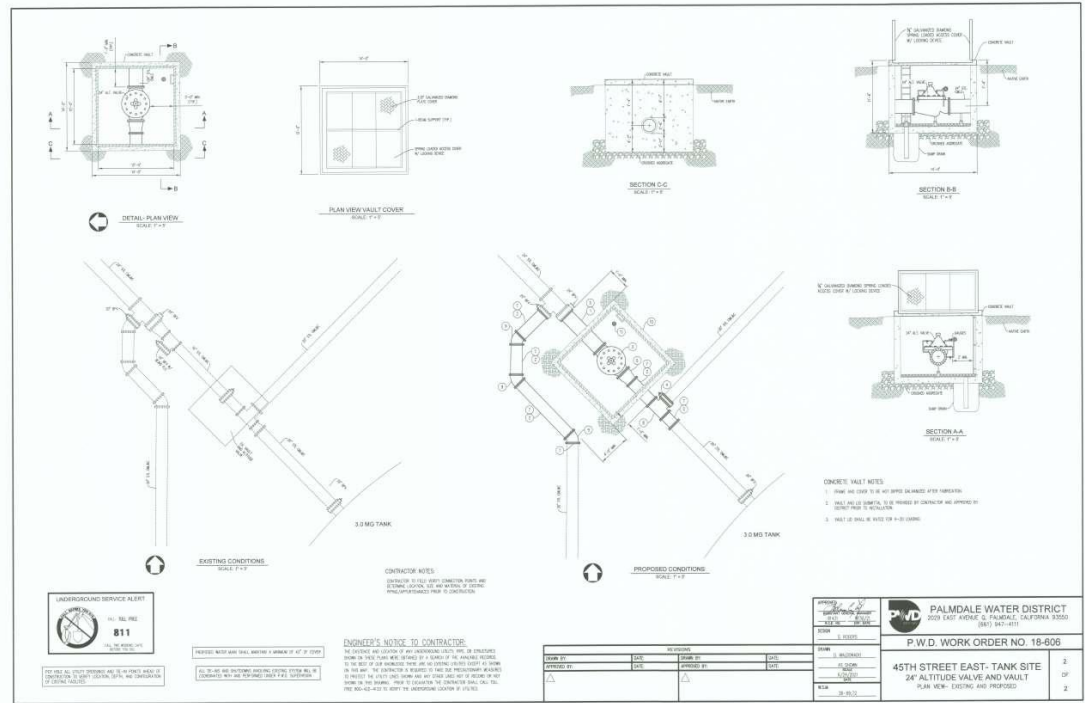
COORDINATES  
WITH CITY STAFF  
ON NEW  
DEVELOPMENT  
PROJECTS



CALCULATION OF  
DEVELOPMENT  
FEES



PREPARES DAM  
REPORTS



**PALMDALE WATER DISTRICT**  
A CENTURY OF SERVICE



# Inspectors



Observes and enforce construction work meets the standard specifications and plans



Coordinates District work with City, County, and CalTrans



Coordinates work with other Departments



Dam Inspections



**PALMDALE WATER DISTRICT**  
A CENTURY OF SERVICE

# Analysts - Engineering

Assists, and coordinates contracts with outside companies

PRWA billings

Prevailing wage compliance

Assists with dam data collection

Backflow Testing and Cross Connections

The collage features three main documents:

- Utility Bill:** From Palmdale Recycled Water Authority, 2029 East Avenue Q, Palmdale, CA 93550. It includes account details, a meter ID of R9000003191244400606693, and a total amount due of \$16.00.
- Usage History Chart:** A bar chart showing water usage in CCF (hundreds of cubic feet) for November 2021 and December 2021. The x-axis ranges from 0 to 100 CCF. A note indicates 1 CCF = 748 Gallons.
- Backflow Testing Report Form:** From Palmdale Water District, 2029 E. Avenue Q, Palmdale, CA 93550. It details a test performed on a 2-inch meter (Model 825 YA, Serial # 123456) by technician John Example. The report includes a checklist for various components like valves, pins, and diaphragms, with results marked as 'CLEANED' or 'HELD AT'. It also includes a 'Your Account' summary with a total current consumption of \$393.00.

# Assistant Engineer



Assists, coordinates and manages consultants and contractors



Prepares bid solicitations



Assists Facilities and Operations with projects



Coordinates project work with outside agencies



**PALMDALE WATER DISTRICT**  
A CENTURY OF SERVICE





**PALMDALE WATER DISTRICT**  
A CENTURY OF SERVICE

**Thank you!**

