



**PALMDALE WATER DISTRICT**  
A CENTURY OF SERVICE

# Facilities Department

Chris Bligh  
Facilities Manager

Board Meeting  
Nov. 14, 2022



# 24 Members in 4 Teams



Construction Crew



Operations  
Technicians –  
Mechanical



Operations  
Technicians – Fleet



Electricians



PALMDALE WATER DISTRICT  
A CENTURY OF SERVICE

# Maintaining the Infrastructure

- Approximately 412 miles of pipeline, ranging from 2" to 42" pipes
- Approximately 9,000 valves
- 22 active well sites, 1 new well currently being drilled
- 15 water storage tank sites, home to 20 storage tanks
- 6 hydropneumatics tank sites for pressure control
- 25 PRV (pressure reducing valve) locations & 2 pressure relief valves
- Palmdale Ditch maintenance and GCL installation



# Other Maintenance & Repair Tasks

- District fleet & equipment
- Sodium hypochlorite generators
- Leslie O. Carter Water Treatment Plant
- 17 booster pump stations
- Electrical motor and systems maintenance & installations
- Onsite emergency generators
- Valve house at Littlerock Dam
- Lake Palmdale



# Construction Crew



**PALMDALE WATER DISTRICT**  
A CENTURY OF SERVICE

# Leaks



# Large Meter Vault



# Pipeline Projects



# Bridge Leak2



# WTP Leak



# Op-Tech - Mechanical



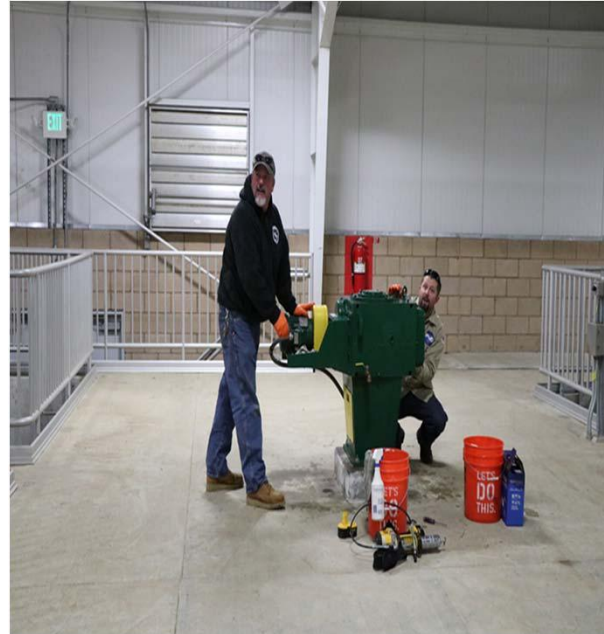
PALMDALE WATER DISTRICT  
A CENTURY OF SERVICE



## Booster Stations



## WTP Maintenance



## Pump Repairs



PALMDALE WATER DISTRICT  
A CENTURY OF SERVICE

# Traveling Screens



# Hypo Generators

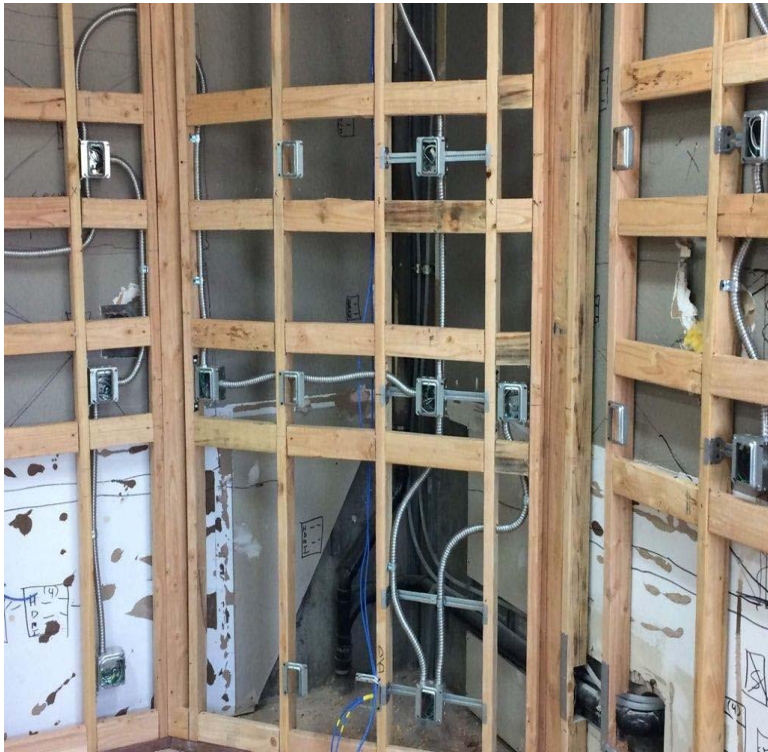


# Electricians



PALMDALE WATER DISTRICT  
A CENTURY OF SERVICE

## Electrical Rough-Ins



## Finished Product



PALMDALE WATER DISTRICT  
A CENTURY OF SERVICE



**Op-Tech - Fleet** 159 total assets: 47 vehicles, 25 trailers, 11 pieces/equip., 71 small equip. & 5 cranes



**PALMDALE WATER DISTRICT**  
A CENTURY OF SERVICE

# New Equipment Prep



PALMDALE WATER DISTRICT  
A CENTURY OF SERVICE

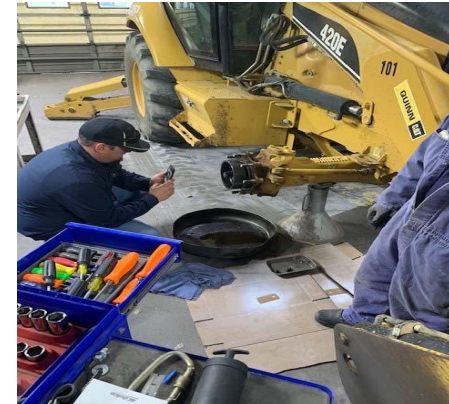


## “New to Us” Equipment Inspections and Prep



PALMDALE WATER DISTRICT  
A CENTURY OF SERVICE

# All Repairs and Maintenance, Large to Small



PALMDALE WATER DISTRICT  
A CENTURY OF SERVICE





**PALMDALE WATER DISTRICT**  
A CENTURY OF SERVICE

**Thank you!**

